

Phospho-DOK2-Y299 pAb



Catalog Number: 166370

Product name

Phospho-DOK2-Y299 pAb

Specificity

Human

Antibody description

Polyclonal antibody to Phospho-DOK2-Y299

Preparation

Antigen: A phospho specific peptide corresponding to residues surrounding Y299 of human DOK2

Formulation

PBS with 0.02% sodium azide, 50% glycerol, pH7.3.

Storage

Store at -20°C. Avoid freeze / thaw cycles.

Clonality

Polyclonal

Ig Type

Rabbit IgG

Applications

WB, IHC, IF

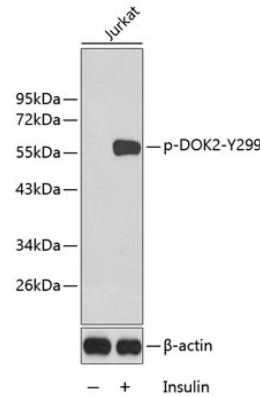
Dilutions

WB 1:500 - 1:2000

IHC 1:50 - 1:100

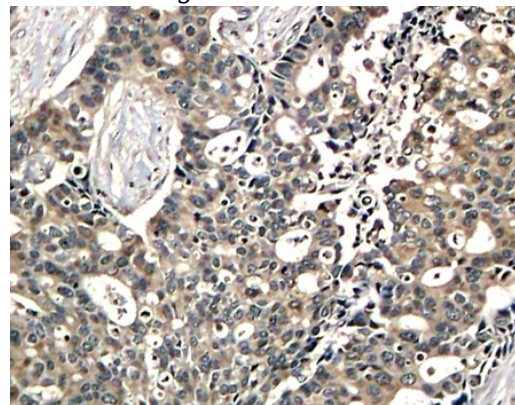
IF 1:100 - 1:200

Validations



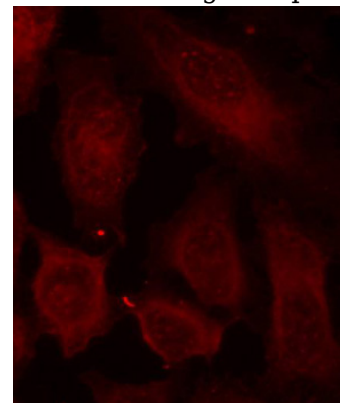
Western blot - Phospho-DOK2-Y299 pAb

Western blot analysis of extracts from Jurkat cells using Phospho-DOK2-Y299 antibody. Secondary antibody: HRP Goat Anti-Rabbit IgG (H+L) at 1:10000 dilution. Lysates/proteins: 25ug per lane. Blocking buffer: 3% BSA.



Immunohistochemistry - Phospho-DOK2-Y299 pAb

Immunohistochemistry of paraffin-embedded human breast carcinoma using Phospho-DOK2-



Y299 antibody

Immunofluorescence - Phospho-DOK2-Y299 pAb

Phospho-DOK2-Y299 pAb



Catalog Number: 166370

Immunofluorescence analysis of methanol-fixed

HeLa cells using Phospho-DOK2-Y299 antibody .