

# AADACL1 antibody



Catalog Number: 107670

## Product name

AADACL1 antibody

## Immunogen

[Human AADACL1 Recombinant protein \(His tag\)](#)

## Specificity

Human, Mouse, Rat; other species not tested.

## Antibody description

AADACL1 Rabbit Polyclonal antibody. Positive IP detected in COLO 320 cells. Positive WB detected in COLO 320 cells. Positive IHC detected in human brain tissue, human kidney tissue, human lung tissue, human ovary tissue, human skin tissue, human spleen tissue. Observed molecular weight by Western-blot: 55 kDa

## Preparation

This antibody was obtained by immunization of AADACL1 recombinant protein (Accession Number: NM\_001005476). Purification method: Antigen affinity purified.

## Formulation

PBS with 0.02% sodium azide and 50% glycerol pH 7.3.

## Storage

Store at -20°C. DO NOT ALIQUOT

## Clonality

Polyclonal

## Ig Type

Rabbit IgG

## Applications

ELISA, WB, IHC, IP

## Dilutions

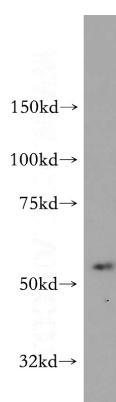
Recommended Dilution:

WB: 1:200-1:2000

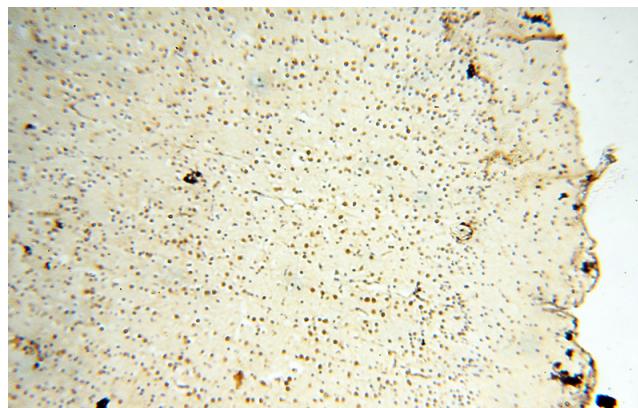
IP: 1:200-1:2000

IHC: 1:20-1:200

## Validations



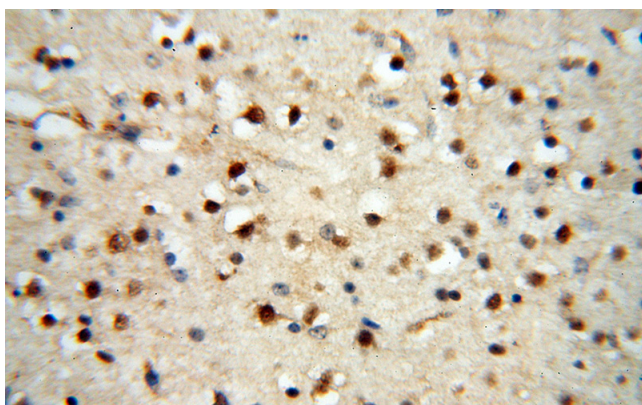
COLO 320 cells were subjected to SDS PAGE followed by western blot with Catalog No:107670(AADACL1 antibody) at dilution of 1:500



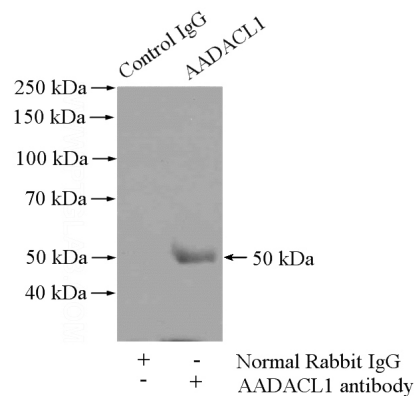
Immunohistochemical of paraffin-embedded human brain using Catalog No:107670(AADACL1 antibody) at dilution of 1:50 (under 10x lens)

# AADACL1 antibody

Catalog Number: 107670



Immunohistochemical of paraffin-embedded human brain using Catalog No:107670(AADACL1 antibody) at dilution of 1:50 (under 40x lens)



IP Result of anti-AADACL1 (IP:Catalog No:107670, 4ug; Detection:Catalog No:107670 1:500) with COLO 320 cells lysate 400ug.