

# Anti-MCP-3/CCL7 antibody



Catalog Number: 105670

## Product name

Anti-MCP-3/CCL7 antibody

## Immunogen

[Human MCP-3/CCL7 \(His Tag\) recombinant protein](#)

## Specificity

Human MCP-3 / CCL7

**Has cross-reactivity** in ELISA with Human CCL1; Human CCL8

**No cross-reactivity** in ELISA with Human CCL11

## Antibody description

Mouse monoclonal to MCP-3/CCL7

## Preparation

This antibody was produced from a hybridoma resulting from the fusion of a mouse myeloma with B cells obtained from a mouse immunized with purified, recombinant Human MCP-3 / CCL7 (rh MCP-3 / CCL7; NP\_006264.2; Gln24-Leu99) and conjugated with PE under optimum conditions, the unreacted PE was removed.

## Formulation

Aqueous solution containing 0.5% BSA and 0.09% sodium azide

## Storage

This antibody is stable for 12 months from date of receipt when stored at 2°C-8°C. Protected from prolonged exposure to light. Do not freeze ! Sodium azide is toxic to cells and should be disposed of properly. Flush with large volumes of

water during disposal.

## Clonality

Monoclonal

## Ig Type

Mouse IgG1

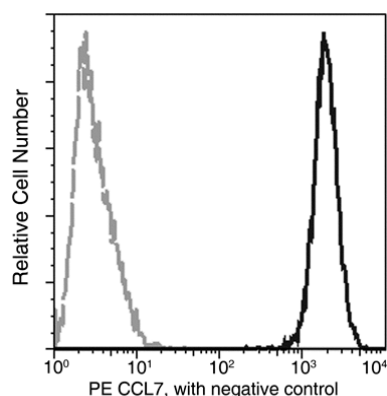
## Applications

FCM

## Dilutions

FCM

## Validations



MCP-3 / CCL7 Antibody (PE), Mouse MAb, Flow Cytometry

Flow cytometric analysis of Human CCL7 expression on THP1 cells. The cells were treated according to manufacturer's manual (BD Pharmingen™ Cat. No. 554714), and then stained with PE-conjugated anti-Human CCL7. The fluorescence histograms were derived from gated events with the forward and side light-scatter characteristics of intact cells.