

# Human C6orf25 / G6B (Fc Tag) recombinant protein



Catalog Number: 503670

## General Information

### Gene Name Synonym

cDNA FLJ35073 fis, clone PLACE6000630

### Protein Construction

A DNA sequence encoding the human G6B (NP\_612116.1) (Met1-Gln146) was expressed with the Fc region of human IgG1 at the C-terminus.

### Organism

Human

### Expression Host

Human Cells

## QC Testing

### Purity

> 95 % as determined by SDS-PAGE.

### Endotoxin

<1.0 EU per µg protein as determined by the LAL method.

### Stability

Samples are stable for up to twelve months from date of receipt at -70°C

### Predicted N terminal

Asn 18

### Molecular Mass

The recombinant human G6B consists 363 amino acids and predicts a molecular mass of 40.2 kDa.

### Formulation

Lyophilized from sterile PBS, pH 7.4.

1. 5 % trehalose and mannitol are added as protectants before lyophilization.

2. Please contact us for any concerns or special requirements.

## Usage Guide

### Storage

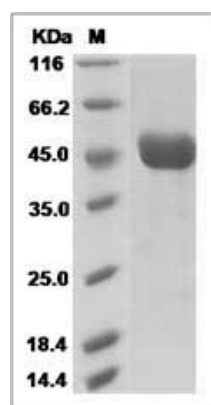
Store it under sterile conditions at -20°C to -80°C.

It is recommended that the protein be aliquoted for optimal storage. Avoid repeated freeze-thaw cycles.

### Reconstitution

Adding sterile water, prepare a stock solution of 0.25 mg/ml. Concentration is measured by UV-Vis.

### SDS-PAGE



Human G6B / C6ORF25 Protein (Fc Tag) SDS-PAGE