

ASRGL1 antibody

Catalog Number: 108270

Product name

ASRGL1 antibody

IP: 1:200-1:2000

IHC: 1:20-1:200

Specificity

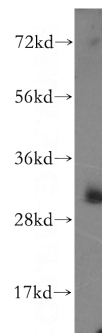
Human, Mouse, Rat; other species not tested.

IF: 1:50-1:500

Antibody description

ASRGL1 Rabbit Polyclonal antibody. Positive IP detected in HeLa cells. Positive WB detected in HeLa cells. Positive IF detected in HeLa cells. Positive IHC detected in human gliomas tissue. Observed molecular weight by Western-blot: 32 kDa

Validations



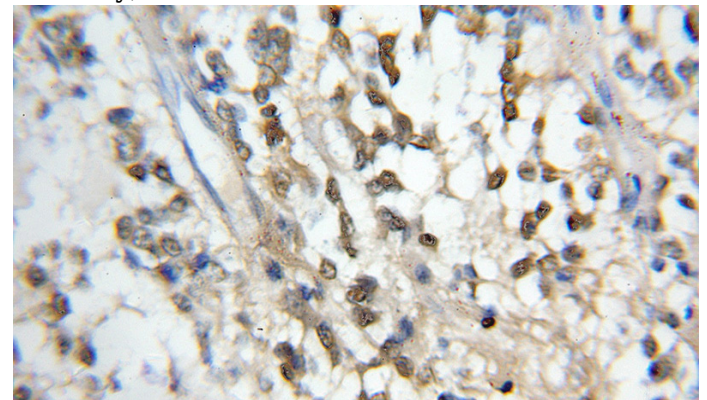
Preparation

This antibody was obtained by immunization of ASRGL1 recombinant protein (Accession Number: NM_001083926). Purification method: Antigen affinity purified.

HeLa cells were subjected to SDS PAGE followed by western blot with Catalog No:108270(ASRGL1 antibody) at dilution of 1:500

Formulation

PBS with 0.1% sodium azide and 50% glycerol pH 7.3.



Storage

Store at -20°C. DO NOT ALIQUOT

Clonality

Polyclonal

Ig Type

Rabbit IgG

Applications

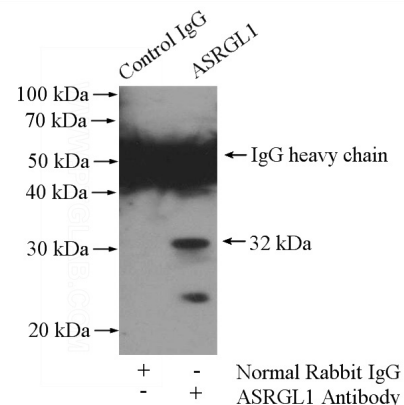
ELISA, WB, IHC, IP, IF

Dilutions

Recommended Dilution:

WB: 1:200-1:2000

Immunohistochemical of paraffin-embedded human gliomas using Catalog No:108270(ASRGL1 antibody) at dilution of 1:50 (under 10x lens)

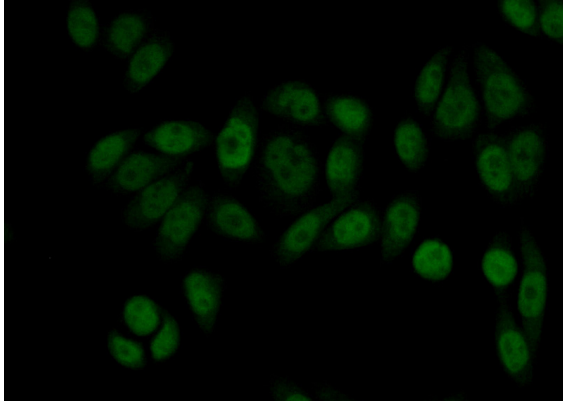


ASRGL1 antibody



Catalog Number: 108270

IP Result of anti-ASRGL1 (IP:Catalog No:108270, 4ug; Detection:Catalog No:108270 1:500) with HeLa cells lysate 3200ug.



Immunofluorescent analysis of (10% Formaldehyde) fixed HeLa cells using Catalog No:108270(ASRGL1 Antibody) at dilution of 1:50 and Alexa Fluor 488-conjugated AffiniPure Goat Anti-Rabbit IgG(H+L)