

PTGES2 antibody

Catalog Number: 114270

Product name

PTGES2 antibody

Specificity

Human, Mouse, Rat; other species not tested.

Antibody description

PTGES2 Rabbit Polyclonal antibody. Positive IF detected in HeLa cells, HepG2 cells. Positive IHC detected in human breast cancer tissue, human colon cancer tissue, human heart tissue. Positive IP detected in mouse heart tissue. Positive WB detected in HeLa cells, HEK-293 cells, HepG2 cells, human stomach tissue, mouse heart tissue. Observed molecular weight by Western-blot: 30-35 kDa, 45 kDa

Preparation

This antibody was obtained by immunization of PTGES2 recombinant protein (Accession Number: NM_025072). Purification method: Antigen affinity purified.

Formulation

PBS with 0.1% sodium azide and 50% glycerol pH 7.3.

Storage

Store at -20°C. DO NOT ALIQUOT

Clonality

Polyclonal

Ig Type

Rabbit IgG

Applications

ELISA, IHC, IF, WB, IP

Dilutions

Recommended Dilution:

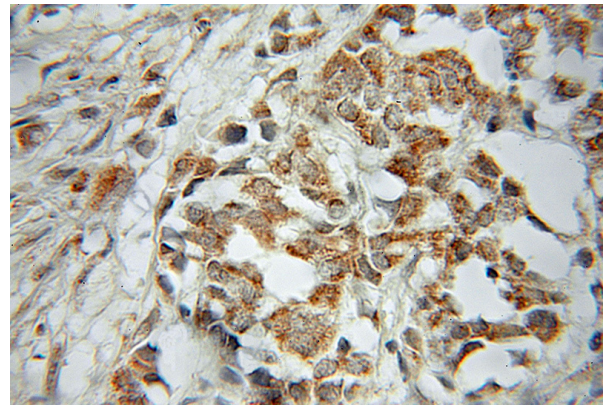
WB: 1:200-1:2000

IP: 1:200-1:2000

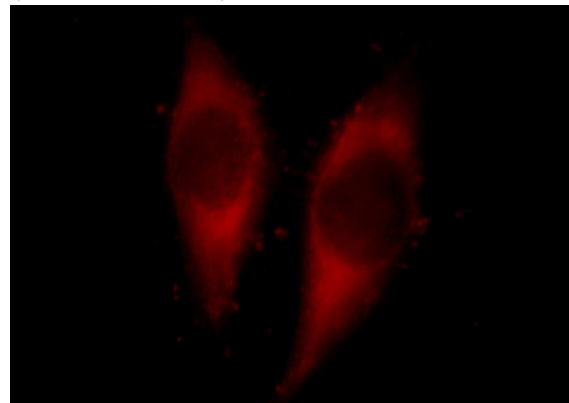
IHC: 1:20-1:200

IF: 1:10-1:100

Validations



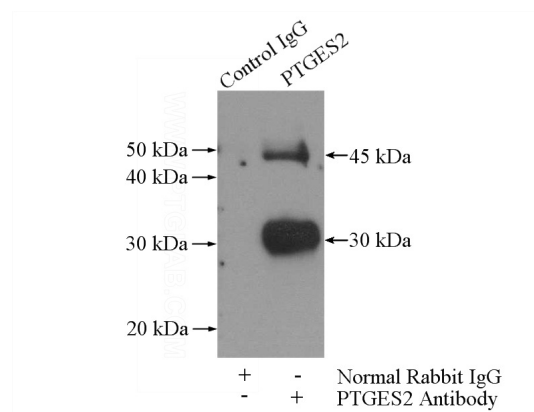
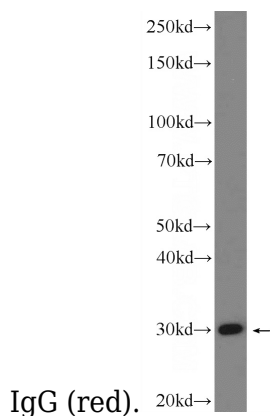
Immunohistochemical of paraffin-embedded human breast cancer using Catalog No:114270(PTGES2 antibody) at dilution of 1:50 (under 40x lens)



Immunofluorescent analysis of HeLa cells, using PTGES2 antibody Catalog No:114270 at 1:25 dilution and Rhodamine-labeled goat anti-rabbit

PTGES2 antibody

Catalog Number: 114270



HeLa cells were subjected to SDS PAGE followed by western blot with Catalog No:114270(PTGES2 Antibody) at dilution of 1:600

IP Result of anti-PTGES2 (IP:Catalog No:114270, 4ug; Detection:Catalog No:114270 1:500) with mouse heart tissue lysate 4000ug.