

LAMB1 antibody

Catalog Number: 112270

Product name

LAMB1 antibody

IP: 1:500-1:5000

IF: 1:20-1:200

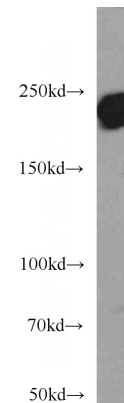
Specificity

Human, Mouse, Rat; other species not tested.

Validations

Antibody description

LAMB1 Rabbit Polyclonal antibody. Positive IF detected in HepG2 cells. Positive IP detected in NIH/3T3 cells. Positive WB detected in NIH/3T3 cells, Jurkat cells. Observed molecular weight by Western-blot: 220 kDa



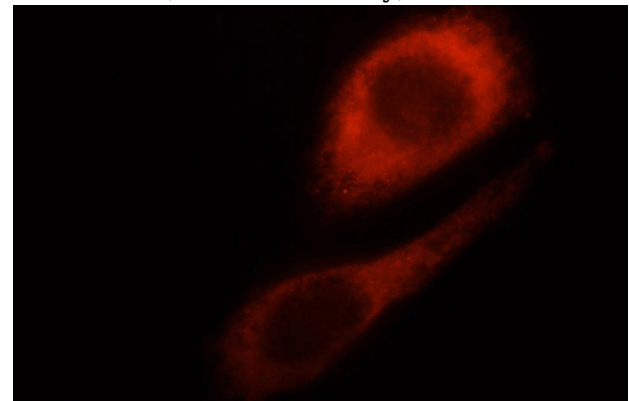
Preparation

This antibody was obtained by immunization of LAMB1 recombinant protein (Accession Number: NM_002291). Purification method: Antigen affinity purified.

NIH/3T3 cells were subjected to SDS PAGE followed by western blot with Catalog No:112270(LAMB1 antibody) at dilution of 1:1000

Formulation

PBS with 0.02% sodium azide and 50% glycerol pH 7.3.



Storage

Store at -20°C. DO NOT ALIQUOT

Clonality

Polyclonal

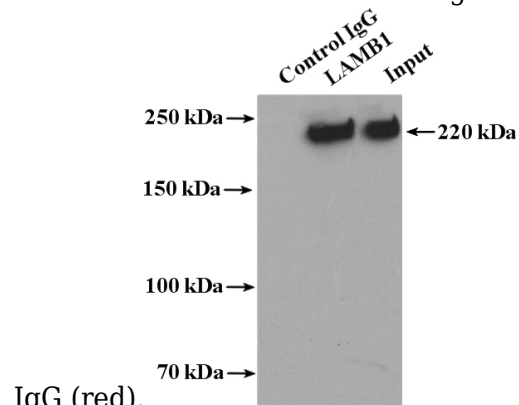
Immunofluorescent analysis of HepG2 cells, using LAMB1 antibody Catalog No:112270 at 1:50 dilution and Rhodamine-labeled goat anti-rabbit

Ig Type

Rabbit IgG

Applications

ELISA, WB, IF, IP



Dilutions

Recommended Dilution:

WB: 1:500-1:5000

IP Result of anti-LAMB1 (IP:Catalog No:112270,

LAMB1 antibody



Catalog Number: 112270

4ug; Detection:Catalog No:112270 1:1000) with NIH/3T3 cells lysate 2000ug.