

# EIF6 antibody

Catalog Number: 110270

## Product name

EIF6 antibody

## Specificity

Human, Mouse, Rat; other species not tested.

## Antibody description

EIF6 Rabbit Polyclonal antibody. Positive IHC detected in human prostate cancer tissue. Positive WB detected in COLO 320 cells, A375 cells, HEK-293 cells, HeLa cells, HepG2 cells, mouse liver tissue. Observed molecular weight by Western-blot: 27-30 kDa

## Preparation

This antibody was obtained by immunization of EIF6 recombinant protein (Accession Number: NM\_001267810). Purification method: Antigen affinity purified.

## Formulation

PBS with 0.1% sodium azide and 50% glycerol pH 7.3.

## Storage

Store at -20°C. DO NOT ALIQUOT

## Clonality

Polyclonal

## Ig Type

Rabbit IgG

## Applications

ELISA, WB, IHC

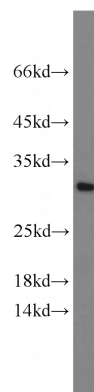
## Dilutions

Recommended Dilution:

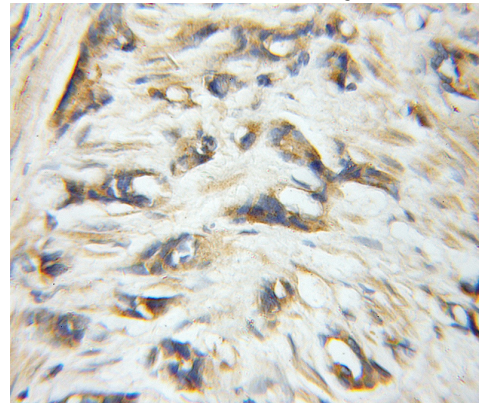
WB: 1:500-1:5000

IHC: 1:20-1:200

## Validations



COLO 320 cells were subjected to SDS PAGE followed by western blot with Catalog No:110270(EIF6 antibody) at dilution of 1:1000



Immunohistochemical of paraffin-embedded human prostate cancer using Catalog No:110270(EIF6 antibody) at dilution of 1:50 (under 10x lens)