

transgelin/SM22-specific antibody



Catalog Number: 106970

Product name

transgelin/SM22-specific antibody

IHC: 1:100-1:2000

Specificity

Human, Mouse, Rat; other species not tested.

Antibody description

transgelin/SM22-specific Rabbit Polyclonal antibody. Positive IHC detected in human heart tissue, human colon tissue, human kidney tissue. Positive WB detected in human colon tissue, mouse colon tissue, mouse skeletal muscle tissue. Observed molecular weight by Western-blot: 22 kDa

Preparation

This antibody was obtained by immunization of Peptide (Accession Number: NM_003186). Purification method: Antigen affinity purified.

Formulation

PBS with 0.02% sodium azide and 50% glycerol pH 7.3.

Storage

Store at -20°C. DO NOT ALIQUOT

Clonality

Polyclonal

Ig Type

Rabbit IgG

Applications

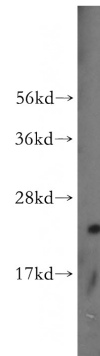
ELISA, WB, IHC

Dilutions

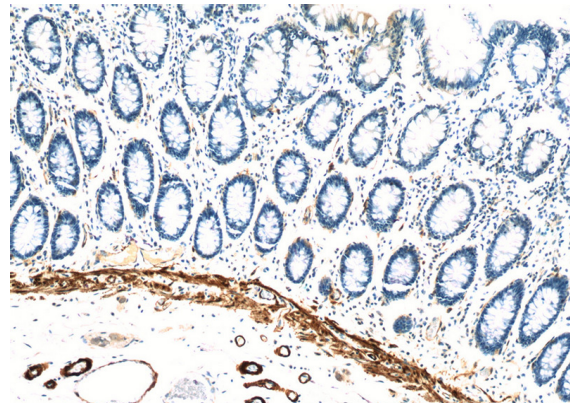
Recommended Dilution:

WB: 1:200-1:2000

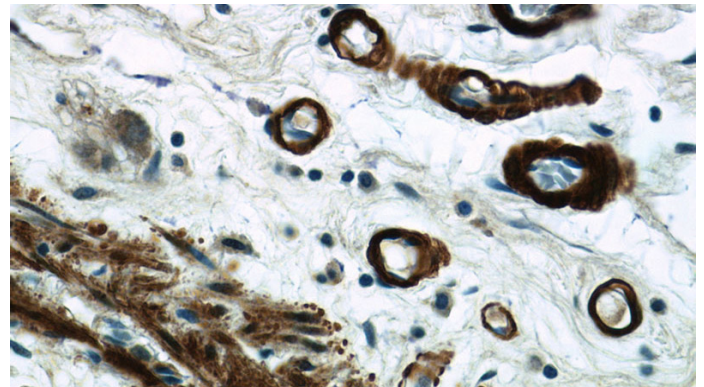
Validations



human colon tissue were subjected to SDS PAGE followed by western blot with Catalog No:116334(TRANSGELIN-1-specific antibody) at dilution of 1:100



Immunohistochemistry of paraffin-embedded human colon tissue slide using Catalog No:116334(TRANSGELIN-1-specific Antibody) at dilution of 1:200 (under 10x lens)



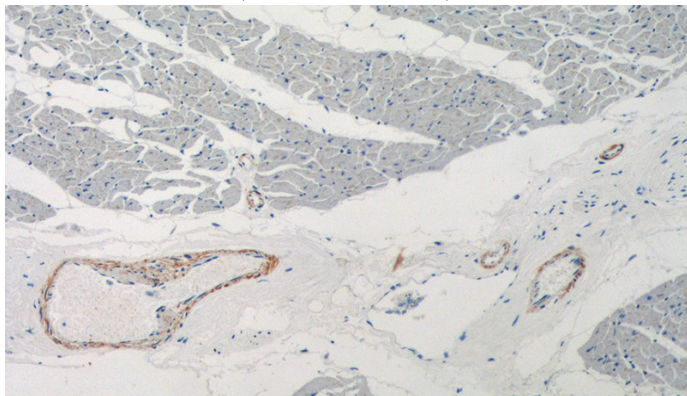
Immunohistochemistry of paraffin-embedded human colon tissue slide using Catalog

transgelin/SM22-specific antibody



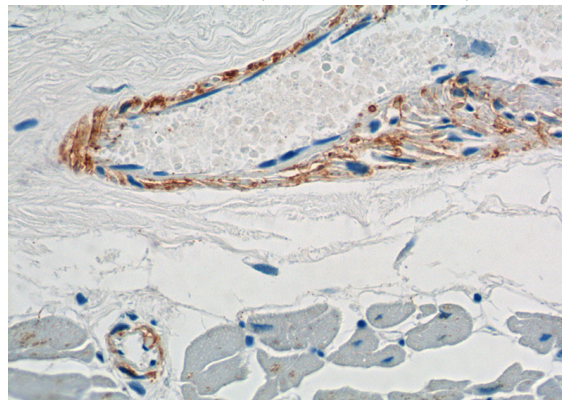
Catalog Number: 106970

No:116334(TRANSGELIN-1-specific Antibody) at dilution of 1:200 (under 40x lens)



Immunohistochemistry of paraffin-embedded human heart tissue slide using Catalog No:116334(TRANSGELIN-1-specific Antibody) at

dilution of 1:2000 (under 10x lens).



Immunohistochemistry of paraffin-embedded human heart tissue slide using Catalog No:116334(TRANSGELIN-1-specific Antibody) at dilution of 1:2000 (under 40x lens).