

Anti-Phospho-PI3 Kinase p85 (Tyr607) Rabbit antibody



Catalog Number: 166970

Product name

ELISA: 1/10000

Anti-Phospho-PI3 Kinase p85 (Tyr607) Rabbit antibody

Specificity

Human, Mouse, Rat, Chicken

Antibody description

Phospho-PI3 Kinase p85 (Tyr607) Rabbit polyclonal antibody

Preparation

Antigen: The antiserum was produced against synthesized peptide derived from human PI3-kinase p85-alpha around the phosphorylation site of Tyr607. AA range:573-622

Formulation

Liquid in PBS containing 50% glycerol, 0.5% BSA and 0.02% sodium azide.

Storage

Store at 4°C short term. Store at -20°C long term. Avoid freeze / thaw cycle.

Clonality

Polyclonal

Ig Type

Rabbit IgG

Applications

ICC/IF, WB, IHC-P, ELISA

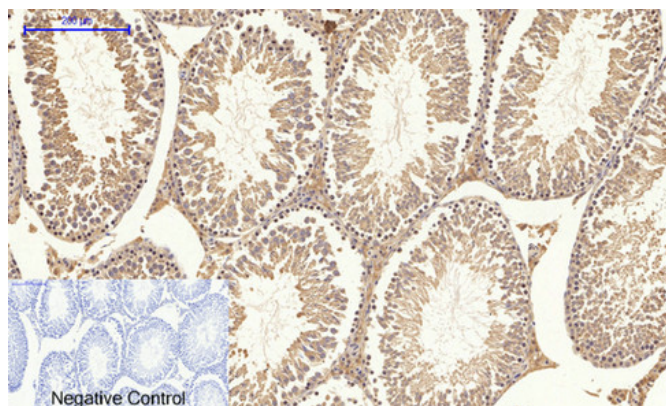
Dilutions

IF: 1/50-200

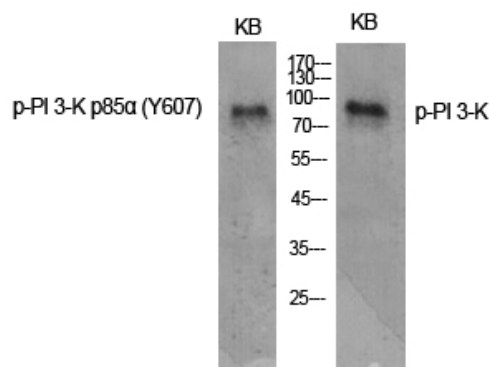
WB: 1/500 - 1/2000

IHC: 1/100 - 1/300

Validations



Immunohistochemical analysis of paraffin-embedded Rat-testis tissue. 1,PI 3-kinase p85α (phospho Tyr607) Polyclonal Antibody was diluted at 1:200(4°C,overnight). 2, Sodium citrate pH 6.0 was used for antibody retrieval(>98°C,20min). 3,Secondary antibody was diluted at 1:200(room temperature, 30min). Negative control was used by secondary antibody only.

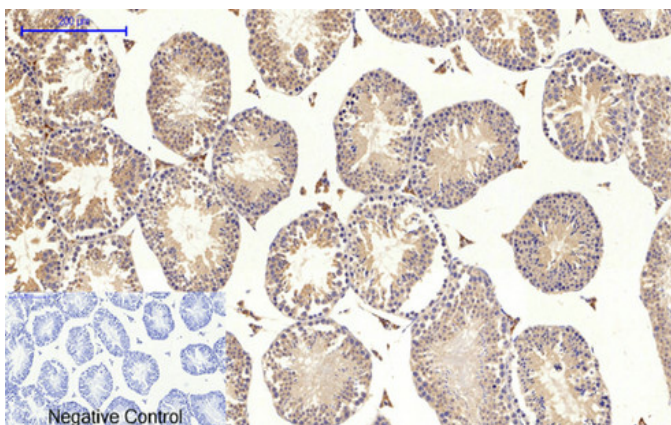


Western Blot analysis of various cells using Phospho-PI 3-kinase p85α (Y607) Polyclonal Antibody diluted at 1:1000

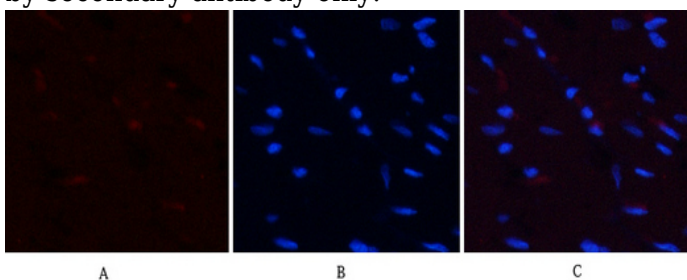
Anti-Phospho-PI3 Kinase p85 (Tyr607) Rabbit antibody



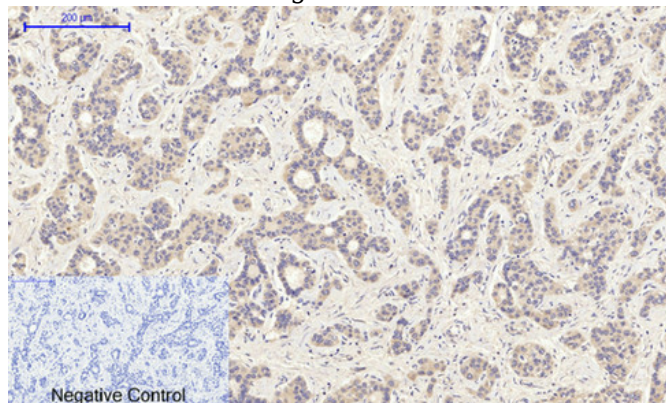
Catalog Number: 166970



Immunohistochemical analysis of paraffin-embedded Mouse-testis tissue. 1,PI 3-kinase p85 α (phospho Tyr607) Polyclonal Antibody was diluted at 1:200(4°C,overnight). 2, Sodium citrate pH 6.0 was used for antibody retrieval(>98°C,20min). 3,Secondary antibody was diluted at 1:200(room temperature, 30min). Negative control was used by secondary antibody only.



Immunofluorescence analysis of rat-heart tissue. 1,PI 3-kinase p85 α (phospho Tyr607) Polyclonal Antibody(red) was diluted at 1:200(4°C,overnight). 2, Cy3 labeled Secondary antibody was diluted at 1:300(room temperature, 50min).3, Picture B: DAPI(blue) 10min. Picture A:Target. Picture B: DAPI. Picture C: merge of A+B



Immunohistochemical analysis of paraffin-embedded Human-liver-cancer tissue. 1,PI 3-kinase p85 α (phospho Tyr607) Polyclonal Antibody was diluted at 1:200(4°C,overnight). 2, Sodium citrate pH 6.0 was used for antibody retrieval(>98°C,20min). 3,Secondary antibody was diluted at 1:200(room temperature, 30min). Negative control was used by secondary antibody only.