

Anti-MAPK15 antibody



Catalog Number: 175970

Product name

Anti-MAPK15 antibody

Specificity

Human, Mouse

Antibody description

Rabbit polyclonal antibody to MAPK15

Preparation

This antigen of this antibody was the antiserum was produced against synthesized peptide derived from human mapk15. aa range:141-190

Formulation

Liquid, Liquid in PBS containing 50% glycerol, 0.5% BSA and 0.02% sodium azide.

Storage

Store at +4°C after thawing. Aliquot store at -20°C or -80°C. Avoid repeated freeze / thaw cycles.

Clonality

Polyclonal

Ig Type

Rabbit IgG

Applications

WB, IHC-P, IF

Dilutions

WB: 1:500-1:2000

IHC-P: 1:100-1:300

IF: 1:100-1:500

Validations

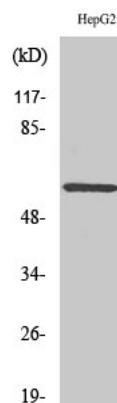


Fig1.; Western Blot analysis of various cells using ERK 8 Polyclonal Antibody cells nucleus extracted by Minute TM Cytoplasmic and Nuclear Fractionation kit (SC-003, Inventbiotech, MN, USA).