

SARS antibody

Catalog Number: 114970

Product name

SARS antibody

IHC: 1:20-1:200

IF: 1:10-1:100

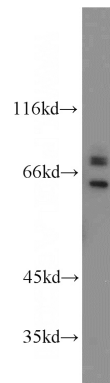
Specificity

Human, Mouse, Rat; other species not tested.

Validations

Antibody description

SARS Rabbit Polyclonal antibody. Positive WB detected in HEK-293 cells, HeLa cells, HepG2 cells. Positive IF detected in HepG2 cells. Positive IHC detected in human lung cancer tissue. Observed molecular weight by Western-blot: 58-64 kDa



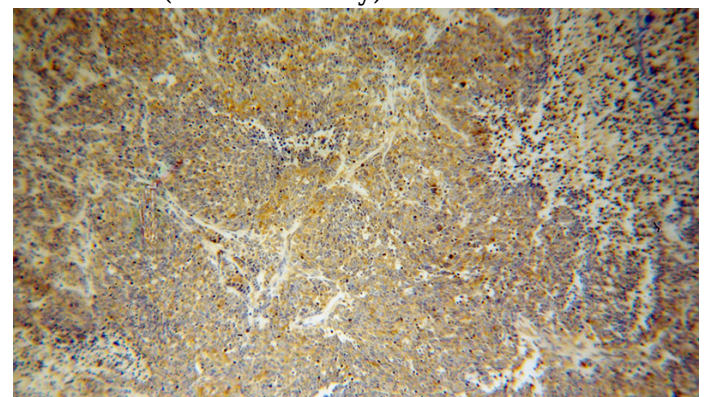
Preparation

This antibody was obtained by immunization of SARS recombinant protein (Accession Number: NM_006513). Purification method: Antigen affinity purified.

HEK-293 cells were subjected to SDS PAGE followed by western blot with Catalog No:114970(SARS antibody) at dilution of 1:1000

Formulation

PBS with 0.02% sodium azide and 50% glycerol pH 7.3.



Storage

Store at -20°C. DO NOT ALIQUOT

Clonality

Polyclonal

Immunohistochemical of paraffin-embedded human lung cancer using Catalog No:114970(SARS antibody) at dilution of 1:100 (under 10x lens)

Ig Type

Rabbit IgG

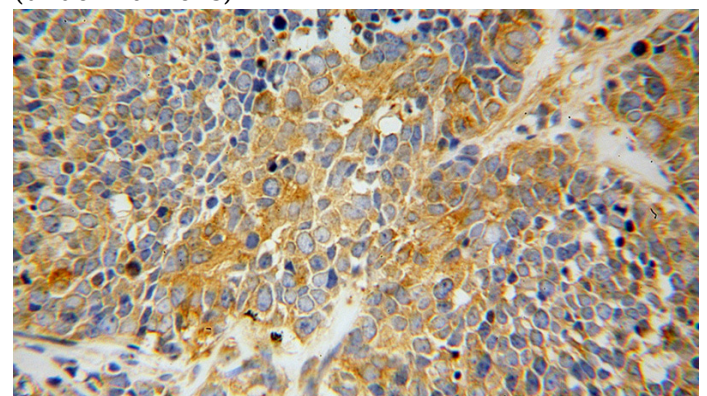
Applications

ELISA, WB, IHC, IF

Dilutions

Recommended Dilution:

WB: 1:500-1:5000

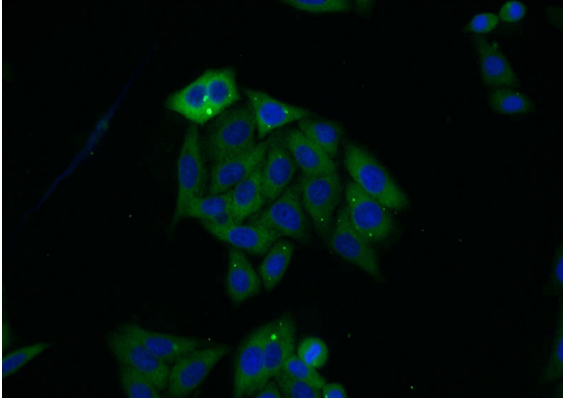


Immunohistochemical of paraffin-embedded

SARS antibody

Catalog Number: 114970

human lung cancer using Catalog
No:114970(SARS antibody) at dilution of 1:100
(under 40x lens)



Immunofluorescent analysis of HepG2 cells using
Catalog No:114970(SARS Antibody) at dilution of
1:25 and Alexa Fluor 488-conjugated AffiniPure
Goat Anti-Rabbit IgG(H+L)