

# GIGYF2 antibody



Catalog Number: 110970

## Product name

GIGYF2 antibody

IP: 1:1000-1:10000

IHC: 1:20-1:200

## Specificity

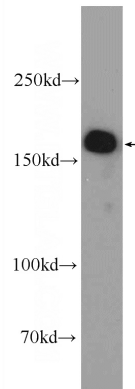
Human; other species not tested.

IF: 1:50-1:500

## Antibody description

GIGYF2 Rabbit Polyclonal antibody. Positive IP detected in Jurkat cells. Positive WB detected in Jurkat cells, HeLa cells. Positive IF detected in HeLa cells. Positive IHC detected in human breast cancer tissue. Observed molecular weight by Western-blot: 150-170 kDa

## Validations



## Preparation

This antibody was obtained by immunization of GIGYF2 recombinant protein (Accession Number: NM\_001103147). Purification method: Antigen affinity purified.

Jurkat cells were subjected to SDS PAGE followed by western blot with Catalog No:110970(GIGYF2 Antibody) at dilution of 1:1000

## Formulation

PBS with 0.1% sodium azide and 50% glycerol pH 7.3.

## Storage

Store at -20°C. DO NOT ALIQUOT

## Clonality

Polyclonal

## Ig Type

Rabbit IgG

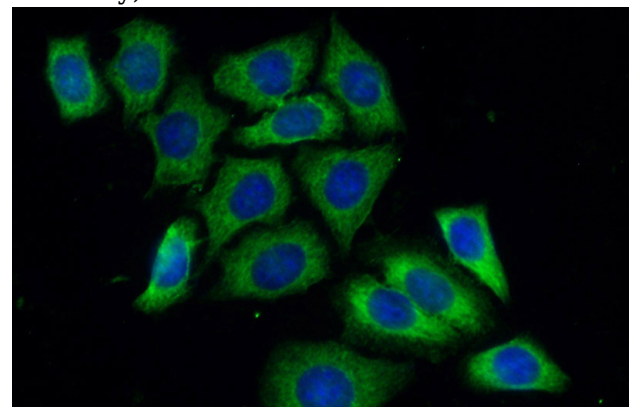
## Applications

ELISA, WB, IHC, IF, IP

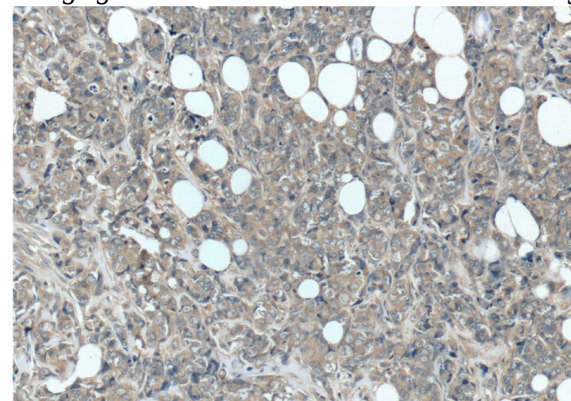
## Dilutions

Recommended Dilution:

WB: 1:1000-1:10000



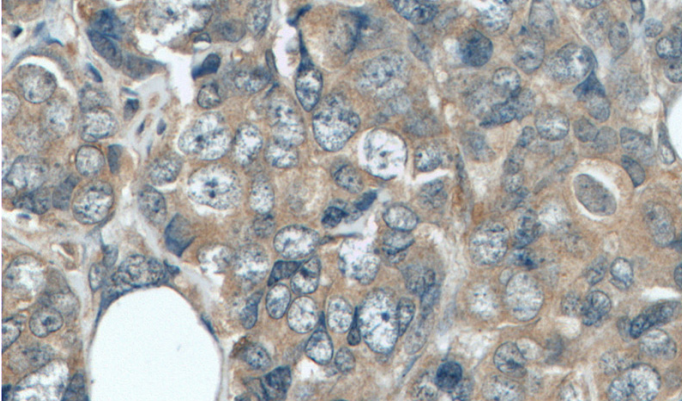
Immunofluorescent analysis of (-20oc Ethanol) fixed HeLa cells using Catalog No:110970(GIGYF2 Antibody) at dilution of 1:50 and Alexa Fluor 488-conjugated AffiniPure Goat Anti-Rabbit IgG(H+L)



# GIGYF2 antibody

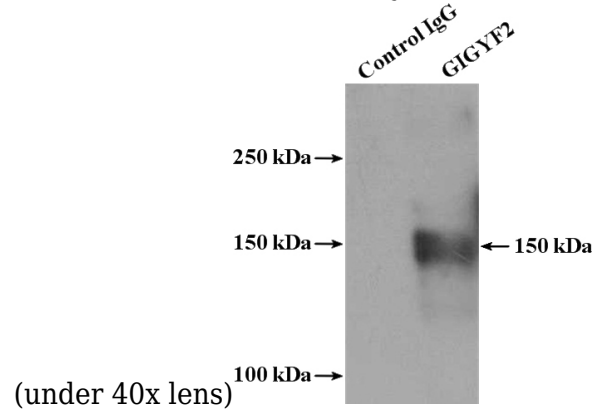
Catalog Number: 110970

Immunohistochemistry of paraffin-embedded human breast cancer tissue slide using Catalog No:110970(GIGYF2 Antibody) at dilution of 1:50 (under 10x lens)



Immunohistochemistry of paraffin-embedded

human breast cancer tissue slide using Catalog No:110970(GIGYF2 Antibody) at dilution of 1:50



IP Result of anti-GIGYF2 (IP:Catalog No:110970, 4ug; Detection:Catalog No:110970 1:2000) with Jurkat cells lysate 2000ug.