

# Anti-c-Myc Rabbit antibody



Catalog Number: 167170

## Product name

Anti-c-Myc Rabbit antibody

## Specificity

Human, Mouse, Rat

## Antibody description

c-Myc Rabbit polyclonal antibody

## Preparation

Antigen: A synthesized peptide derived from human c-Myc

## Formulation

Rabbit IgG in phosphate buffered saline , pH 7.4, 150mM NaCl, 0.02% sodium azide and 50% glycerol.

## Storage

Store at 4°C short term. Store at -20°C long term. Avoid freeze / thaw cycle.

## Clonality

Polyclonal

## Ig Type

Rabbit IgG

## Applications

WB, IHC-P, ICC/IF, IP, FC

## Dilutions

WB: 1/500-1/2000

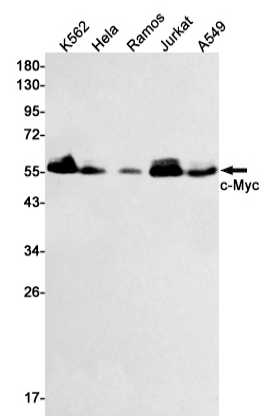
IHC: 1/50-1/200

ICC/IF: 1/50-1/200

IP: 1/50

FC: 1/50

## Validations



Western blot detection of c-Myc in K562, HeLa, Ramos, Jurkat, A549 cell lysates using c-Myc Rabbit pAb(1:1000 diluted). Predicted band size: 57kDa. Observed band size: 57kDa.