

TOM1L1 antibody



Catalog Number: 116170

Product name

TOM1L1 antibody

Specificity

human; other species not tested.

Antibody description

TOM1L1 Rabbit Polyclonal antibody. Positive WB detected in HeLa cells. Positive IHC detected in human prostate cancer. Observed molecular weight by Western-blot: 53kd

Preparation

This antibody was obtained by immunization of TOM1L1 recombinant protein (Accession Number: NM_001321173). Purification method: Antigen affinity purified.

Formulation

PBS with 0.1% sodium azide and 50% glycerol pH 7.3.

Storage

Store at -20°C. DO NOT ALIQUOT

Clonality

Polyclonal

Ig Type

Rabbit IgG

Applications

ELISA, WB, IHC

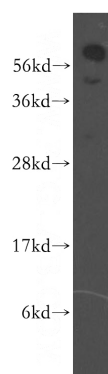
Dilutions

Recommended Dilution:

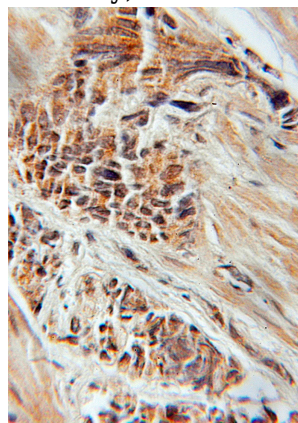
WB: 1:500-1:5000

IHC: 1:20-1:200

Validations



HeLa cells were subjected to SDS PAGE followed by western blot with Catalog No:116170(TOM1L1 antibody) at dilution of 1:500



Immunohistochemical of paraffin-embedded human prostate cancer using Catalog No:116170(TOM1L1 antibody) at dilution of 1:50 (under 10x lens)