

# GSK3B antibody

Catalog Number: 111170

## Product name

GSK3B antibody

## Specificity

Human, Mouse; other species not tested.

## Antibody description

GSK3B Rabbit Polyclonal antibody. Positive FC detected in HeLa cells. Positive IF detected in Ethacrynic acid treated HeLa cells. Positive IHC detected in human testis tissue. Positive WB detected in mouse brain tissue, HeLa cells. Positive IP detected in mouse brain tissue. Observed molecular weight by Western-blot: 46 kDa

## Preparation

This antibody was obtained by immunization of GSK3B recombinant protein (Accession Number: NM\_002093). Purification method: Antigen Affinity purified.

## Formulation

PBS with 0.02% sodium azide and 50% glycerol pH 7.3.

## Storage

Store at -20°C. DO NOT ALIQUOT

## Clonality

Polyclonal

## Ig Type

Rabbit IgG

## Applications

ELISA, WB, IF, IHC, FC, IP

## Dilutions

Recommended Dilution:

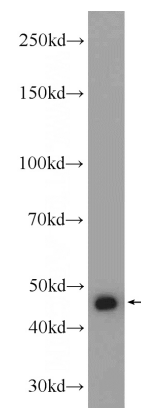
WB: 1:500-1:5000

IP: 1:500-1:5000

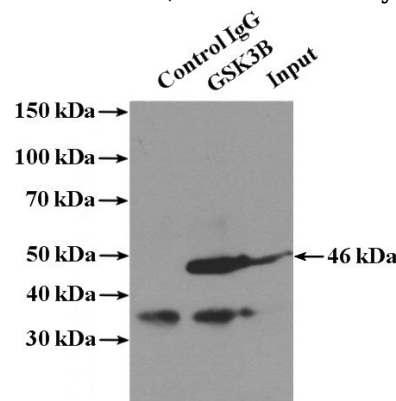
IHC: 1:20-1:200

IF: 1:10-1:100

## Validations



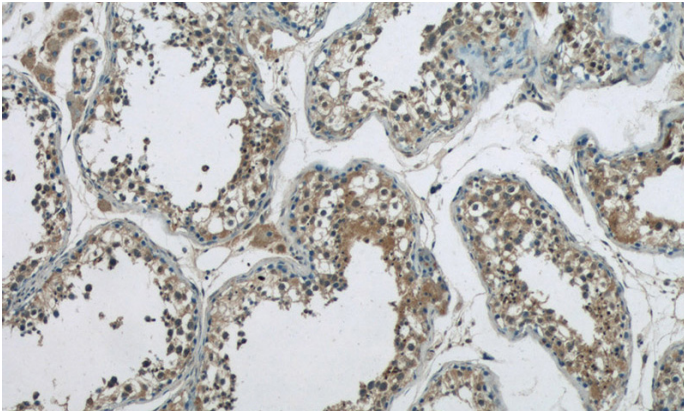
mouse brain tissue were subjected to SDS PAGE followed by western blot with Catalog No:111170(GSK3B Antibody) at dilution of 1:1000



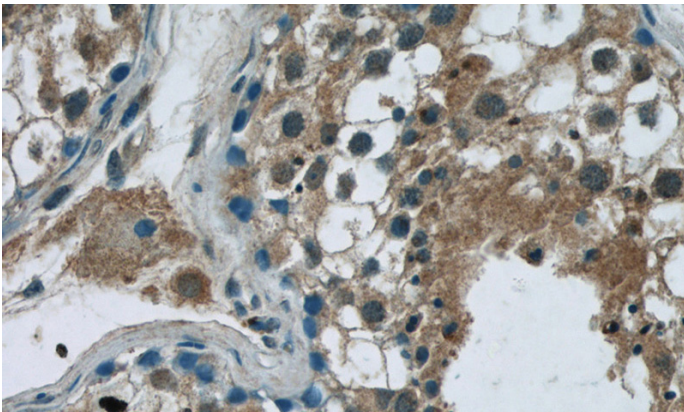
IP Result of anti-GSK3B (IP:Catalog No:111170, 4ug; Detection:Catalog No:111170 1:1000) with mouse brain tissue lysate 4000ug.

# GSK3B antibody

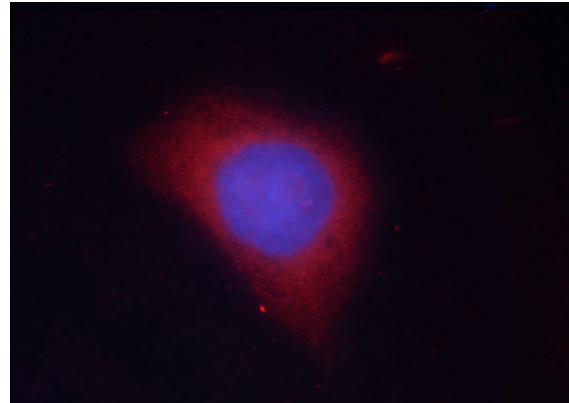
Catalog Number: 111170



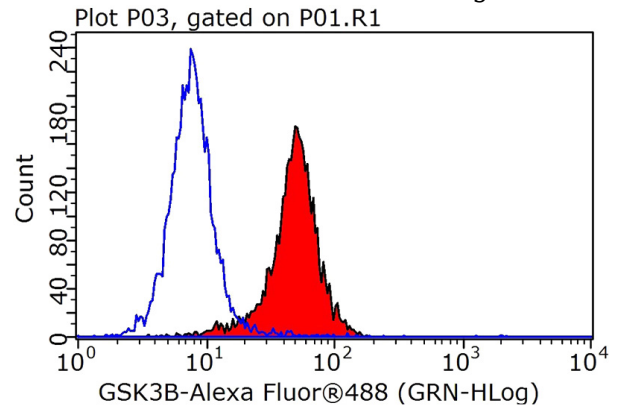
Immunohistochemistry of paraffin-embedded human testis tissue slide using Catalog No:111170(GSK3B Antibody) at dilution of 1:50 (under 10x lens)



Immunohistochemistry of paraffin-embedded human testis tissue slide using Catalog No:111170(GSK3B Antibody) at dilution of 1:50 (under 40x lens)



Immunofluorescent analysis of Ethacrynic acid treated HeLa cells using Catalog No:111170(GSK3B Antibody) at dilution of 1:25 and Rhodamine-Goat anti-Rabbit IgG



1X10<sup>6</sup> HeLa cells were stained with .05ug GSK3B antibody (Catalog No:111170, red) and control antibody (blue). Fixed with 90% MeOH blocked with 3% BSA (30 min). FITC-Goat anti-Rabbit IgG with dilution 1:100.