

EID1 antibody

Catalog Number: 110170

Product name

EID1 antibody

WB: 1:500-1:5000

IHC: 1:20-1:200

Specificity

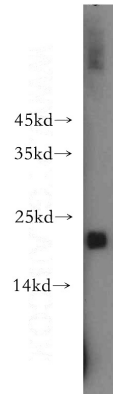
Human, Mouse; other species not tested.

IF: 1:10-1:100

Antibody description

EID1 Rabbit Polyclonal antibody. Positive WB detected in HepG2 cells, A431 cells, HT-1080 cells, human skeletal muscle tissue, K-562 cells, U-937 cells. Positive IHC detected in human breast cancer tissue. Positive IF detected in HepG2 cells. Observed molecular weight by Western-blot: 20-22kd

Validations



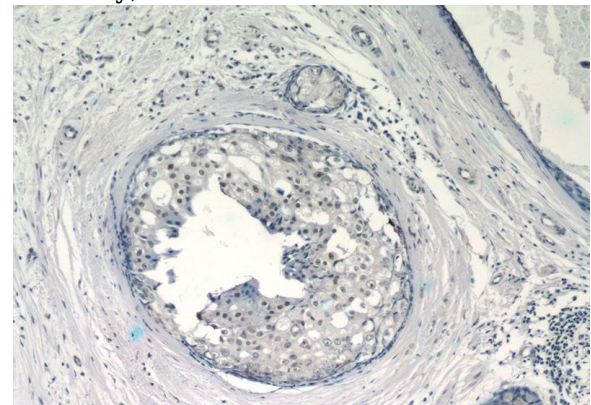
Preparation

This antibody was obtained by immunization of EID1 recombinant protein (Accession Number: BC024151). Purification method: Antigen affinity purified.

HepG2 cells were subjected to SDS PAGE followed by western blot with Catalog No:110170(EID1 antibody) at dilution of 1:300

Formulation

PBS with 0.02% sodium azide and 50% glycerol pH 7.3.



Storage

Store at -20°C. DO NOT ALIQUOT

Clonality

Polyclonal

Immunohistochemistry of paraffin-embedded human breast cancer tissue slide using Catalog No:110170(EID1 Antibody) at dilution of 1:50 (under 10x lens)

Ig Type

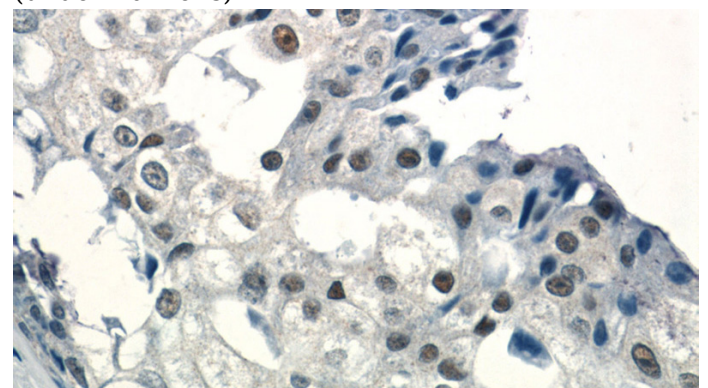
Rabbit IgG

Applications

ELISA, WB, IHC, IF

Dilutions

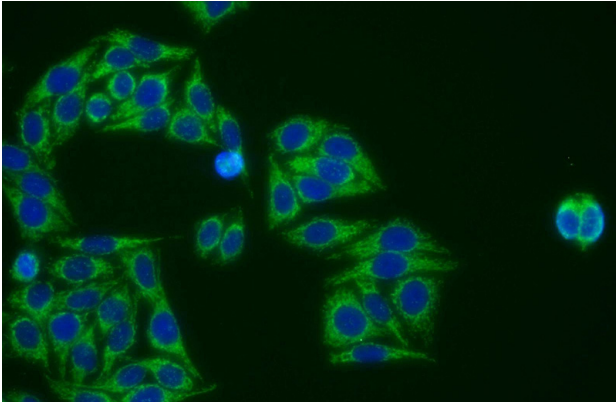
Recommended Dilution:



EID1 antibody

Catalog Number: 110170

Immunohistochemistry of paraffin-embedded human breast cancer tissue slide using Catalog No:110170(EID1 Antibody) at dilution of 1:50 (under 40x lens)



Immunofluorescent analysis of HepG2 cells using Catalog No:110170(EID1 Antibody) at dilution of 1:25 and Alexa Fluor 488-conjugated AffiniPure Goat Anti-Rabbit IgG(H+L)