

# Anti-Cullin 3/CUL-3 Rabbit antibody



Catalog Number: 168870

## Product name

Rabbit IgG

Anti-Cullin 3/CUL-3 Rabbit antibody

## Applications

## Specificity

WB, FC, IP

Human, Mouse, Rat

## Dilutions

## Antibody description

1:1000-1:2000

Cullin 3/CUL-3 Rabbit monoclonal antibody

1:20

## Preparation

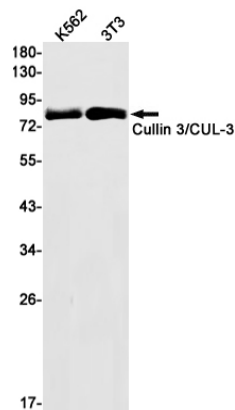
1:20

Antigen: A synthetic peptide of human Cullin 3

## Validations

## Formulation

Supplied in 50nM Tris-Glycine(pH 7.4), 0.15M NaCl, 40%Glycerol, 0.01% sodium azide and 0.05% BSA.



## Storage

Store at 4°C short term. Aliquot and store at -20°C long term. Avoid freeze / thaw cycle.

## Clonality

Monoclonal

Western blot detection of Cullin 3/CUL-3 in K562,3T3 cell lysates using Cullin 3/CUL-3 Rabbit mAb(1:1000 diluted).Predicted band size:89kDa.Observed band size:89kDa.

## Ig Type