

# Anti-Acetyl-Histone H4 (Lys5) Rabbit antibody



Catalog Number: 167870

## Product name

Rabbit IgG

Anti-Acetyl-Histone H4 (Lys5) Rabbit antibody

## Applications

## Specificity

WB, IHC-P, ICC/IF, IP

Human, Mouse, Rat

## Dilutions

## Antibody description

WB: 1/1000-1/2000

Acetyl-Histone H4 (Lys5) Rabbit monoclonal antibody

IHC: 1/50-1/200

ICC/IF: 1/50-1/200

## Preparation

IP: 1/50

Antigen: A synthesized peptide derived from human Histone H4 (acetyl K5)

## Validations

## Formulation

Rabbit IgG in phosphate buffered saline , pH 7.4, 150mM NaCl, 0.02% sodium azide and 50% glycerol.

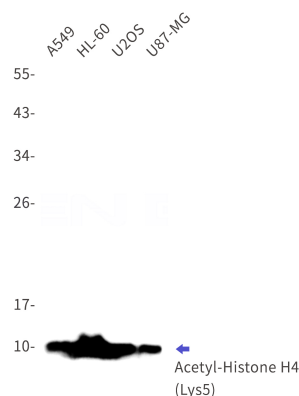
## Storage

Store at 4°C short term. Store at -20°C long term. Avoid freeze / thaw cycle.

## Clonality

Monoclonal

## Ig Type



Western blot detection of Acetyl-Histone H4 (Lys5) in A549,HL-60,U2OS,U87-MG cell lysates using Acetyl-Histone H4 (Lys5) Rabbit mAb(1:1000 diluted).Observed band size:11kDa.