

MSI2 antibody

Catalog Number: 112870

Product name

MSI2 antibody

Immunogen

[Human Musashi-2 Recombinant protein \(GST tag\)](#)

Specificity

Human, Mouse, Rat; other species not tested.

Antibody description

MSI2 Rabbit Polyclonal antibody. Positive IHC detected in human ovary tumor tissue, human gliomas tissue. Positive WB detected in mouse brain tissue, C6 cells, COLO 320 cells, MCF-7 cells, PC-12 cells. Observed molecular weight by Western-blot: 37-40 kDa

Preparation

This antibody was obtained by immunization of MSI2 recombinant protein (Accession Number: NM_138962). Purification method: Antigen affinity purified.

Formulation

PBS with 0.1% sodium azide and 50% glycerol pH 7.3.

Storage

Store at -20°C. DO NOT ALIQUOT

Clonality

Polyclonal

Ig Type

Rabbit IgG

Applications

ELISA, WB, IHC

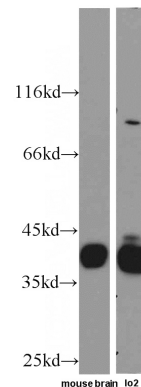
Dilutions

Recommended Dilution:

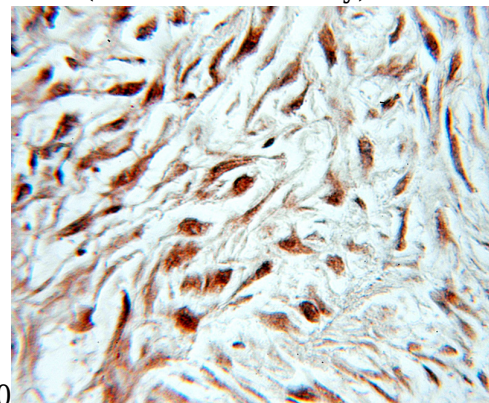
WB: 1:200-1:2000

IHC: 1:10-1:100

Validations



mouse brain tissue were subjected to SDS PAGE followed by western blot with Catalog No:112870(Musashi-2 antibody) at dilution of



1:500
Immunohistochemical of paraffin-embedded human ovary tumor using Catalog No:112870(Musashi-2 antibody) at dilution of 1:10 (under 10x lens)