

GAS2 antibody



Catalog Number: 110870

Product name

GAS2 antibody

Specificity

Human, Mouse, Rat; other species not tested.

Antibody description

GAS2 Rabbit Polyclonal antibody. Positive WB detected in human kidney tissue, human liver tissue. Positive IHC detected in human lung cancer tissue. Observed molecular weight by Western-blot: 35 kDa

Preparation

This antibody was obtained by immunization of GAS2 recombinant protein (Accession Number: NM_001391935). Purification method: Antigen affinity purified.

Formulation

PBS with 0.1% sodium azide and 50% glycerol pH 7.3.

Storage

Store at -20°C. DO NOT ALIQUOT

Clonality

Polyclonal

Ig Type

Rabbit IgG

Applications

ELISA, WB, IHC

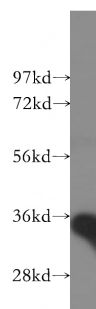
Dilutions

Recommended Dilution:

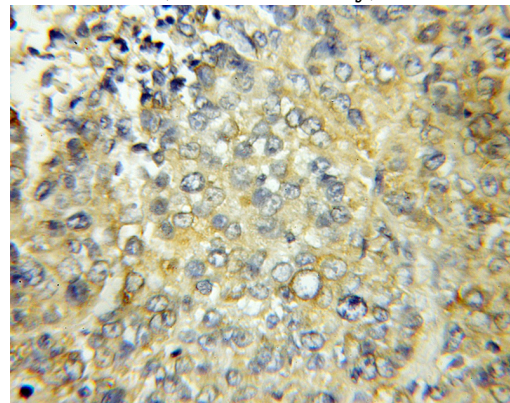
WB: 1:500-1:5000

IHC: 1:20-1:200

Validations



human kidney tissue were subjected to SDS PAGE followed by western blot with Catalog No:110870(GAS2 antibody) at dilution of 1:500



Immunohistochemical of paraffin-embedded human lung cancer using Catalog No:110870(GAS2 antibody) at dilution of 1:50 (under 10x lens)