

# Anti-TPSD1 antibody

Catalog Number: 176470

## Product name

Anti-TPSD1 antibody

## Specificity

Human

## Antibody description

Rabbit polyclonal antibody to TPSD1

## Preparation

This antigen of this antibody was synthesized peptide derived from tryptase-3 at aa range: 51-100

## Formulation

Liquid, Liquid in PBS containing 50% glycerol, 0.5% BSA and 0.02% sodium azide.

## Storage

Store at +4°C after thawing. Aliquot store at -20°C or -80°C. Avoid repeated freeze / thaw cycles.

## Clonality

Polyclonal

## Ig Type

Rabbit IgG

## Applications

WB

## Dilutions

WB: 1:500-1:2000

## Validations

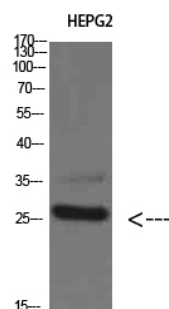


Fig1:: Western Blot analysis of HEPG2 cells using Tryptase-3 Polyclonal Antibody diluted at 1:800. Secondary antibody (catalog#: HA1001) was diluted at 1:20000

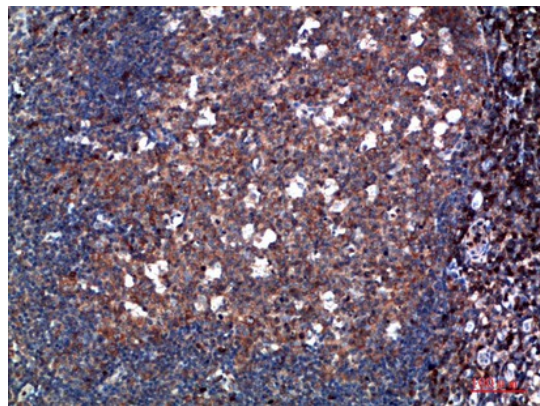


Fig2:: Immunohistochemical analysis of paraffin-embedded human-tonsil, antibody was diluted at 1:200