

OCT2 antibody

Catalog Number: 113470

Product name

OCT2 antibody

IP: 1:200-1:1000

IHC: 1:20-1:200

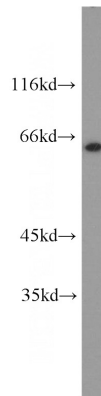
Specificity

Human, Mouse; other species not tested.

Validations

Antibody description

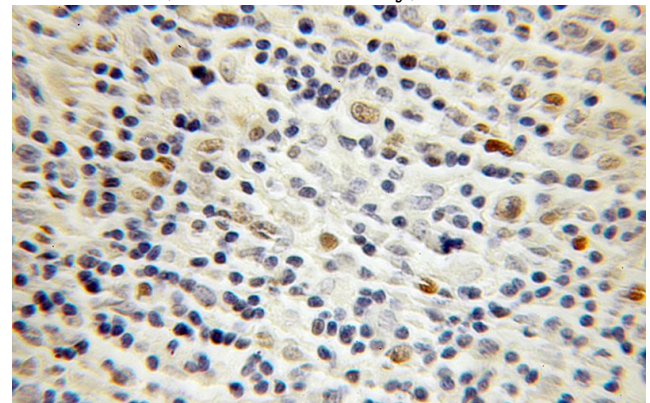
OCT2 Rabbit Polyclonal antibody. Positive IHC detected in human lymphoma tissue. Positive WB detected in NIH/3T3 cells, mouse ovary tissue. Positive IP detected in NIH/3T3 cells. Observed molecular weight by Western-blot: 55 kDa



Preparation

This antibody was obtained by immunization of α CT2 recombinant protein (Accession Number: NM_001247994). Purification method: Antigen affinity purified.

NIH/3T3 cells were subjected to SDS PAGE followed by western blot with Catalog No:113470(POU2F2 antibody) at dilution of 1:500



Formulation

PBS with 0.1% sodium azide and 50% glycerol pH 7.3.

Storage

Store at -20°C. DO NOT ALIQUOT

Clonality

Polyclonal

Immunohistochemical of paraffin-embedded human lymphoma using Catalog No:113470(POU2F2 antibody) at dilution of 1:100 (under 10x lens)

Ig Type

Rabbit IgG

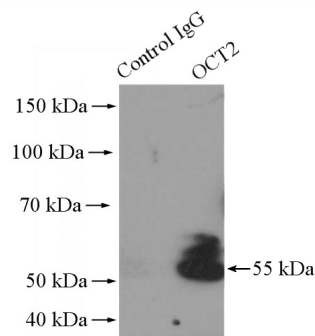
Applications

ELISA, WB, IHC, IP

Dilutions

Recommended Dilution:

WB: 1:200-1:2000



+ - Normal Rabbit IgG
- + OCT2 Antibody

IP Result of anti-POU2F2 (IP:Catalog No:113470,

OCT2 antibody



Catalog Number: 113470

4ug; Detection:Catalog No:113470 1:300) with NIH/3T3 cells lysate 1200ug.