

Anti-SATB1 Rabbit antibody



Catalog Number: 167760

Product name

Anti-SATB1 Rabbit antibody

Specificity

Human, Mouse, Rat

Antibody description

SATB1 Rabbit monoclonal antibody

Preparation

Antigen: A synthetic peptide of human SATB1

Formulation

50nM Tris-Glycine(pH 7.4), 0.15M NaCl, 40%Glycerol, 0.01% sodium azide and 0.05% BSA

Storage

Store at 4°C short term. Store at -20°C long term. Avoid freeze / thaw cycle.

Clonality

Monoclonal

Ig Type

Rabbit IgG

Applications

WB, IHC-P, ICC/IF, FC, IP

Dilutions

WB: 1/1000-1/5000

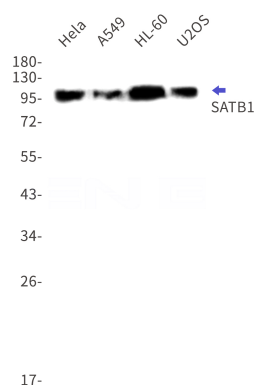
IHC: 1/20-1/50

ICC/IF: 1/20-1/50

FC: 1/100

IP: 1/20-1/50

Validations



Western blot detection of SATB1 in HeLa, A549, HL-60, U2OS cell lysates using SATB1 Rabbit mAb(1:1000 diluted). Predicted band size: 86kDa. Observed band size: 100kDa.