

Anti-LRP1 Rabbit antibody



Catalog Number: 167360

Product name

Anti-LRP1 Rabbit antibody

WB: 1/10000-1/20000

IHC: 1/50-1/100

Specificity

Human, Mouse, Rat

ICC/IF: 1/50-1/100

IP: 1/30

FC: 1/50

Antibody description

LRP1 Rabbit polyclonal antibody

Preparation

Antigen: A synthesized peptide derived from human LRP1

Formulation

Rabbit IgG in phosphate buffered saline , pH 7.4, 150mM NaCl, 0.02% sodium azide and 50% glycerol.

Storage

Store at 4°C short term. Store at -20°C long term. Avoid freeze / thaw cycle.

Clonality

Polyclonal

Ig Type

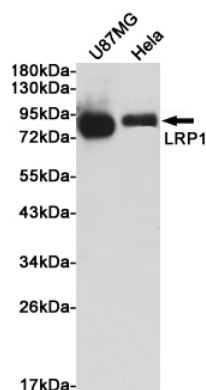
Rabbit IgG

Applications

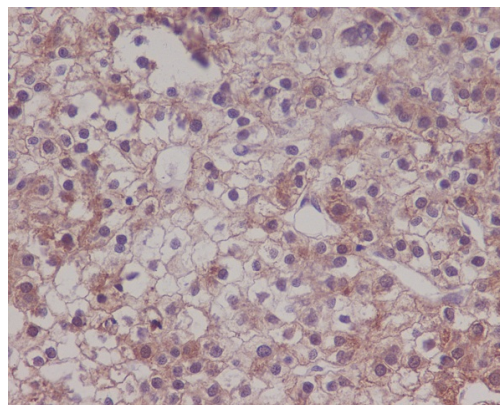
WB, IHC-P, ICC/IF, IP, FC

Dilutions

Validations



Western blot analysis of extracts from U87MG and Hela cells using LRP1 Rabbit pAb at 1:1000 dilution. Predicted band size: 85kDa. Observed band size: 85kDa.



Immunohistochemical analysis of paraffin-embedded human liver carcinoma, using LRP1 Antibody.