

NUDT21 antibody



Catalog Number: 113360

Product name

NUDT21 antibody

WB: 1:200-1:2000

IP: 1:200-1:2000

Specificity

Human, Mouse, Rat; other species not tested.

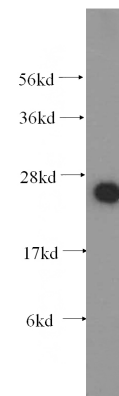
IHC: 1:20-1:200

IF: 1:20-1:200

Antibody description

NUDT21 Rabbit Polyclonal antibody. Positive IHC detected in human placenta tissue, human brain tissue, human cervical cancer tissue. Positive IF detected in MCF-7 cells. Positive IP detected in HeLa cells. Positive WB detected in human brain tissue, A431 cells, HEK-293 cells, HeLa cells. Observed molecular weight by Western-blot: 26kd

Validations



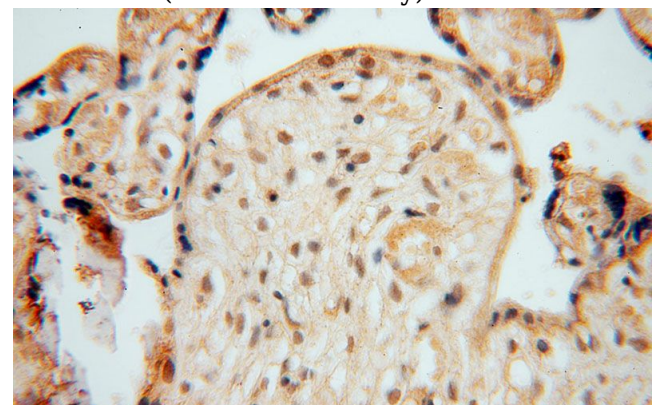
Preparation

This antibody was obtained by immunization of NUDT21 recombinant protein (Accession Number: NM_007006). Purification method: Antigen affinity purified.

human brain tissue were subjected to SDS PAGE followed by western blot with Catalog No:113360(NUDT21 antibody) at dilution of 1:500

Formulation

PBS with 0.1% sodium azide and 50% glycerol pH 7.3.



Storage

Store at -20°C. DO NOT ALIQUOT

Clonality

Polyclonal

Ig Type

Rabbit IgG

Immunohistochemical of paraffin-embedded human placenta using Catalog No:113360(NUDT21 antibody) at dilution of 1:50 (under 40x lens)

Applications

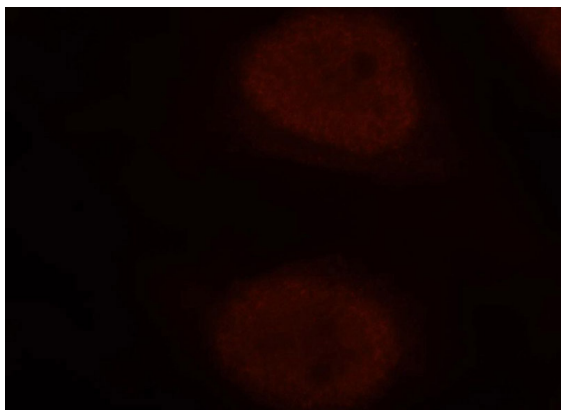
ELISA, WB, IHC, IF, IP

Dilutions

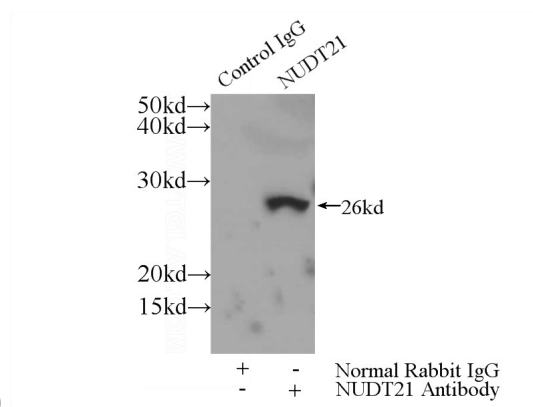
Recommended Dilution:

NUDT21 antibody

Catalog Number: 113360



Immunofluorescent analysis of MCF-7 cells, using NUDT21 antibody Catalog No:113360 at 1:50 dilution and Rhodamine-labeled goat anti-rabbit



IgG (red).

IP Result of anti-NUDT21 (IP:Catalog No:113360, 3ug; Detection:Catalog No:113360 1:500) with HeLa cells lysate 3000ug.