

# Cyclin A1 antibody



Catalog Number: 109660

## Product name

Cyclin A1 antibody

WB: 1:200-1:2000

IHC: 1:20-1:200

## Specificity

Human, Mouse, Rat; other species not tested.

## Antibody description

Cyclin A1 Rabbit Polyclonal antibody. Positive WB detected in SKOV-3 cells, HEK-293 cells, human testis tissue, NIH/3T3 cells, U-937 cells. Positive IHC detected in human testis tissue, human breast cancer tissue, human cervical cancer tissue. Observed molecular weight by Western-blot: 65 kDa, 57 kDa

## Preparation

This antibody was obtained by immunization of Cyclin A1 recombinant protein (Accession Number: NM\_001111045). Purification method: Antigen affinity purified.

## Formulation

PBS with 0.02% sodium azide and 50% glycerol pH 7.3.

## Storage

Store at -20°C. DO NOT ALIQUOT

## Clonality

Polyclonal

## Ig Type

Rabbit IgG

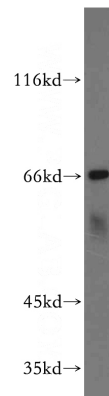
## Applications

ELISA, WB, IHC

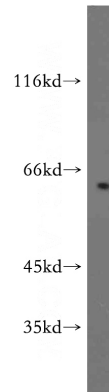
## Dilutions

Recommended Dilution:

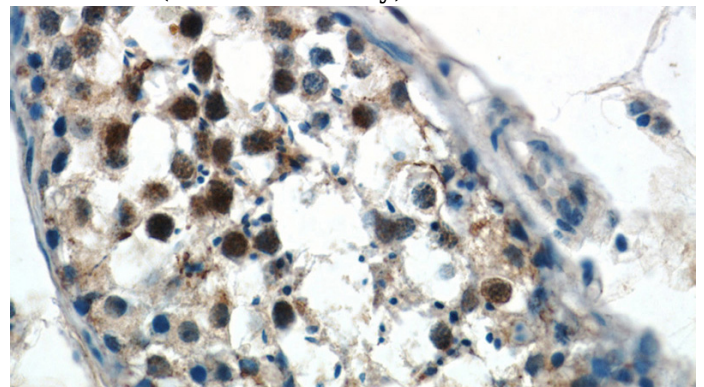
## Validations



SKOV-3 cells were subjected to SDS PAGE followed by western blot with Catalog No:109660(CCNA1 antibody) at dilution of 1:500



human testis tissue were subjected to SDS PAGE followed by western blot with Catalog No:109660(CCNA1 antibody) at dilution of 1:500



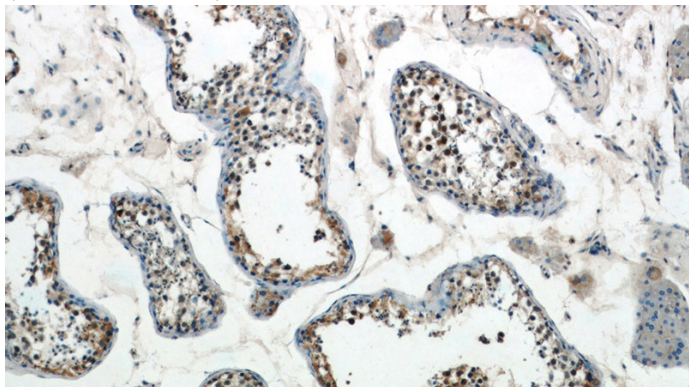
Immunohistochemistry of paraffin-embedded human testis tissue slide using Catalog

# Cyclin A1 antibody

Catalog Number: 109660

---

No:109660(CCNA1 Antibody) at dilution of 1:50  
(under 40x lens)



Immunohistochemistry of paraffin-embedded  
human testis tissue slide using Catalog  
No:109660(CCNA1 Antibody) at dilution of 1:50  
(under 10x lens)