

# C14orf159 antibody



Catalog Number: 108660

---

**Product name**

C14orf159 antibody

Polyclonal

**Ig Type**

Rabbit IgG

**Immunogen**

[Human C14orf159 Recombinant protein \(His tag\)](#)

**Applications****Specificity**

ELISA, IHC

Human; other species not tested.

**Dilutions****Antibody description**

Recommended Dilution:

C14orf159 Rabbit Polyclonal antibody. Positive IHC detected in human heart tissue.

IHC: 1:20-1:200

**Validations****Preparation**

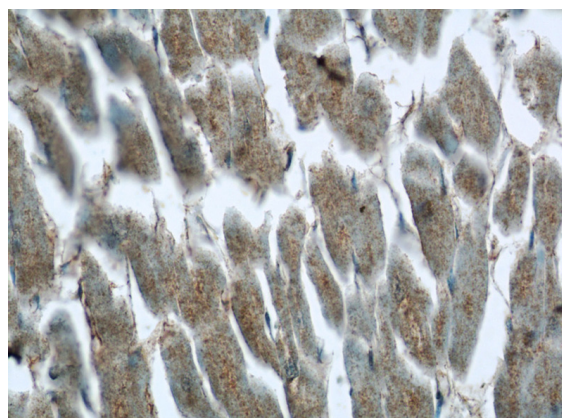
This antibody was obtained by immunization of C14orf159 recombinant protein (Accession Number: NM\_001102367). Purification method: Antigen affinity purified.

**Formulation**

PBS with 0.1% sodium azide and 50% glycerol pH 7.3.

**Storage**

Store at -20°C. DO NOT ALIQUOT

**Clonality**

Immunohistochemistry of paraffin-embedded human heart tissue slide using Catalog No:108660(C14orf159 Antibody) at dilution of 1:50 (under 40x lens)