

14-3-3 GAMMA-Specific antibody



Catalog Number: 107660

Product name

14-3-3 GAMMA-Specific antibody

Recommended Dilution:

WB: 1:200-1:2000

Specificity

Human, Mouse, Rat, Dog; other species not tested.

IP: 1:200-1:2000

IF: 1:10-1:100

Antibody description

14-3-3 GAMMA-Specific Rabbit Polyclonal antibody. Positive IF detected in MDCK cells. Positive WB detected in mouse IMCD3 cells (RNAi), A431 cells, human brain tissue, Jurkat cells, K-562 cells, NIH/3T3 cells, U-937 cells. Positive IP detected in mouse brain tissue. Observed molecular weight by Western-blot: 28-33 kDa

Validations

Preparation

This antibody was obtained by immunization of 14-3-3 GAMMA-Specific recombinant protein (Accession Number: NM_012479). Purification method: Antigen affinity purified.

Formulation

PBS with 0.1% sodium azide and 50% glycerol pH 7.3.

Storage

Store at -20°C. DO NOT ALIQUOT

Clonality

Polyclonal

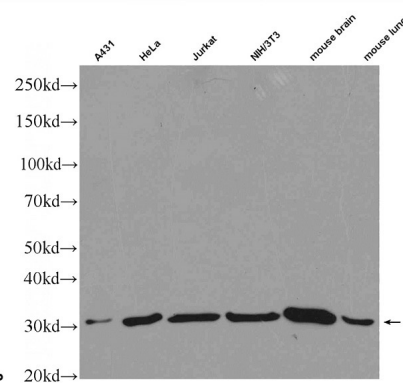
Ig Type

Rabbit IgG

Applications

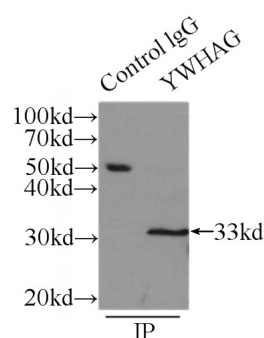
ELISA, IP, WB, IF

Dilutions



A431 cells were subjected to SDS PAGE followed by western blot with Catalog No:107660(14 3 3GAMMA Antibody) at dilution of 1:600

RNAi result of Catalog No:107660(anti-14-3-3G) in Mouse IMCD3 cells From Dr.Seongjin Seo.

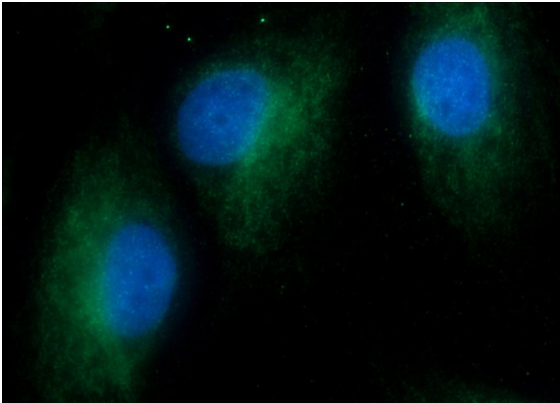


IP Result of anti-14 3 3GAMMA (IP:Catalog No:107660, 3ug; Detection:Catalog No:107660 1:800) with mouse brain tissue lysate 8000ug.

14-3-3 GAMMA-Specific antibody



Catalog Number: 107660



Immunofluorescent analysis of MDCK cells using Catalog No:107660(14 3 3GAMMA Antibody) at dilution of 1:25 and Alexa Fluor 488-conjugated AffiniPure Goat Anti-Rabbit IgG(H+L)