

SR140 antibody



Catalog Number: 115660

Product name

SR140 antibody

WB: 1:1000-1:10000

IHC: 1:20-1:200

Specificity

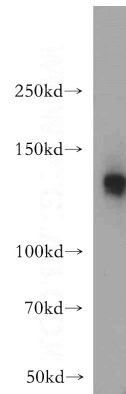
Human, Mouse, Rat; other species not tested.

IF: 1:10-1:100

Antibody description

SR140 Rabbit Polyclonal antibody. Positive WB detected in mouse heart tissue, HeLa cells, human brain tissue, L02 cells. Positive IF detected in HEK-293 cells, HeLa cells, HepG2 cells. Positive IHC detected in human breast cancer tissue. Observed molecular weight by Western-blot: 120-130 kDa

Validations



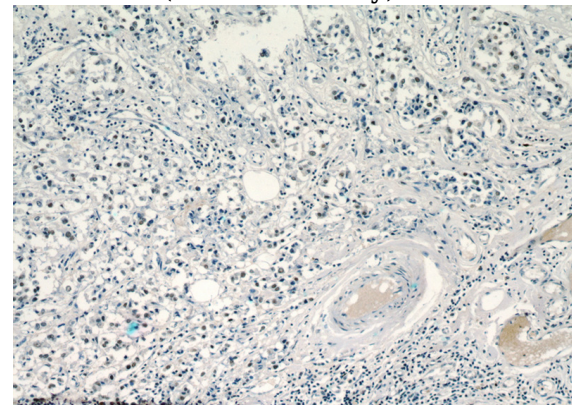
Preparation

This antibody was obtained by immunization of SR140 recombinant protein (Accession Number: NM_001320220). Purification method: Antigen affinity purified.

mouse heart tissue were subjected to SDS PAGE followed by western blot with Catalog No:115660(SR140 antibody) at dilution of 1:500

Formulation

PBS with 0.02% sodium azide and 50% glycerol pH 7.3.



Storage

Store at -20°C. DO NOT ALIQUOT

Clonality

Polyclonal

Immunohistochemical of paraffin-embedded human breast cancer using Catalog No:115660(SR140 antibody) at dilution of 1:100 (under 10x lens)

Ig Type

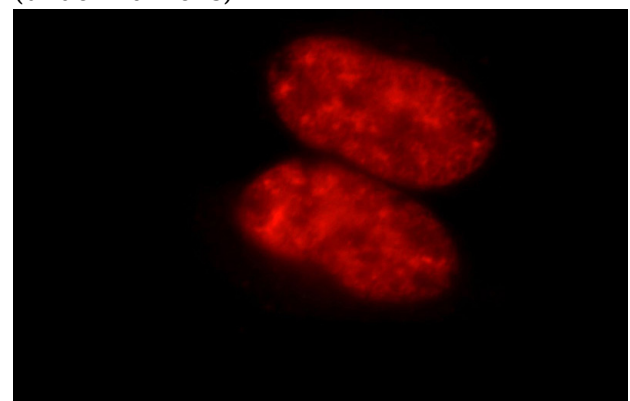
Rabbit IgG

Applications

ELISA, WB, IHC, IF

Dilutions

Recommended Dilution:



SR140 antibody



Catalog Number: 115660

Immunofluorescent analysis of 293 cells, using SR140 antibody Catalog No:115660 at 1:25

dilution and Rhodamine-labeled goat anti-rabbit IgG (red).