

# RHOC antibody



Catalog Number: 114660

## Product name

RHOC antibody

## Specificity

Human, Mouse, Rat; other species not tested.

## Antibody description

RHOC Rabbit Polyclonal antibody. Positive WB detected in HeLa cells, C6 cells, NIH/3T3 cells. Observed molecular weight by Western-blot: 22 kDa

## Preparation

This antibody was obtained by immunization of RH<sup>o</sup>C recombinant protein (Accession Number: NM\_001042679). Purification method: Antigen affinity purified.

## Formulation

PBS with 0.1% sodium azide and 50% glycerol pH 7.3.

## Storage

Store at -20°C. DO NOT ALIQUOT

## Clonality

Polyclonal

## Ig Type

Rabbit IgG

## Applications

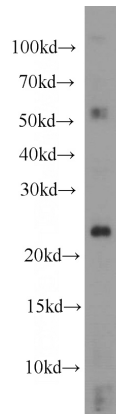
ELISA, WB

## Dilutions

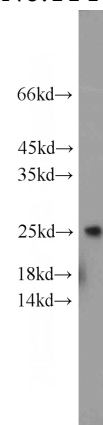
Recommended Dilution:

WB: 1:200-1:2000

## Validations



HeLa cells were subjected to SDS PAGE followed by western blot with Catalog No:114660(RHoc



antibody) at dilution of 1:500

NIH/3T3 cells were subjected to SDS PAGE followed by western blot with Catalog No:114660(RHoc antibody) at dilution of 1:500