

# Anti-CTLA-4/CD152 antibody



Catalog Number: 103660

## Product name

Anti-CTLA-4/CD152 antibody

## Immunogen

[Mouse CTLA-4/CD152 \(His Tag\) recombinant protein](#)

## Specificity

Mouse CTLA-4 / CD152

## Antibody description

Rabbit polyclonal to CTLA-4/CD152

## Preparation

Produced in rabbits immunized with purified, recombinant Mouse CTLA-4 / CD152 (rM CTLA-4 / CD152; NP\_033973.2; Met 1-Phe 162). Total IgG was purified by Protein A affinity chromatography.

## Formulation

0.2 µm filtered solution in PBS with 5% trehalose

## Storage

This antibody can be stored at 2°C-8°C for one month without detectable loss of activity. Antibody products are stable for twelve months from date of receipt when stored at -20°C to -80°C.

Preservative-Free.

Sodium azide is recommended to avoid contamination (final concentration 0.05%-0.1%). It is toxic to cells and should be disposed of properly. Avoid repeated freeze-thaw cycles.

## Clonality

Polyclonal

## Ig Type

Rabbit IgG

## Applications

ELISA, WB

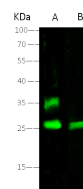
## Dilutions

WB: 20-40 µg/ml

ELISA: 0.5-1.0 µg/mL

This antibody can be used at 0.5-1.0 µg/mL with the appropriate secondary reagents to detect Mouse CTLA4. The detection limit for Mouse CTLA4 is approximately 0.0049 ng/well.

## Validations



Lanes		A	B
Items		K562	Jurkat
Sample (Membrane Lysate)			
Sample Volume (µg/lane)		20	
Gel		13% SDS-PAGE reducing gel	
Recommended Concentration		10-20µg/ml	
Secondary Antibody		Dylight 800-labeled Antibody to Rabbit IgG (H+L), at 1:5000 dilution.	
Developed using Odyssey Imaging system.			
Explanation		Predicted band size : 25 kDa Observed band size : 26 kDa Additional bands at : 35 kDa (We are unsure as to the identity of these extra bands. They are possible non specific bindings).	

CTLA-4 / CD152 Antibody, Rabbit PAb, Western blot