

Anti-RPS6 (7B10) Mouse antibody



Catalog Number: 168260

Product name

Anti-RPS6 (7B10) Mouse antibody

Specificity

Human, Mouse, Rat, Monkey

Antibody description

RPS6 (7B10) Mouse monoclonal antibody

Preparation

Antigen: Synthetic peptide derived from human S6 Ribosomal Protein.

Formulation

Purified mouse monoclonal antibody in PBS(pH 7.4) containing with 0.03% Proclin300 and 50% glycerol.

Storage

Store at 4°C short term. Store at -20°C long term. Avoid freeze / thaw cycle.

Clonality

Monoclonal

Ig Type

Mouse IgG1

Applications

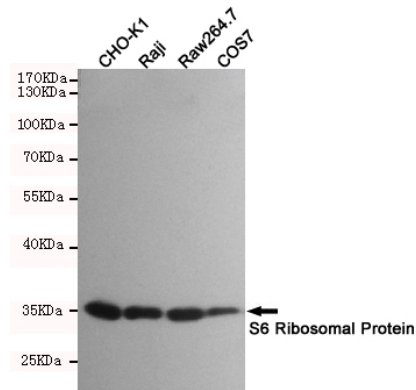
WB, ICC/IF, IP

Dilutions

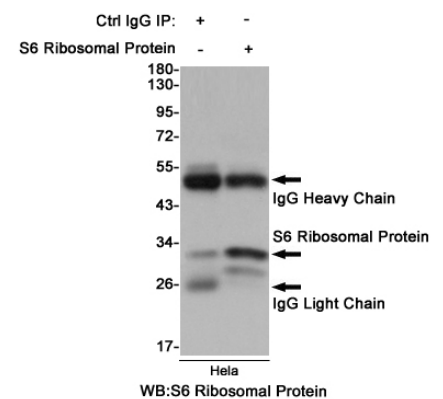
WB: 1/2000

;ICC: 1/200

Validations

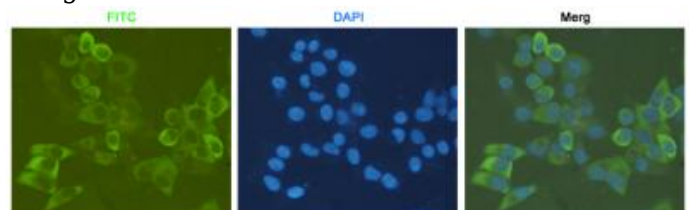


Western blot detection of S6 Ribosomal Protein in CHO-K1, Raji, Raw264.7 and COS7 cell lysates using S6 Ribosomal Protein mouse mAb (1:2000 diluted). Predicted band size: 32 kDa. Observed



band size: 32 kDa.

Immunoprecipitation analysis of HeLa cell lysates using S6 Ribosomal Protein Mouse mAb.

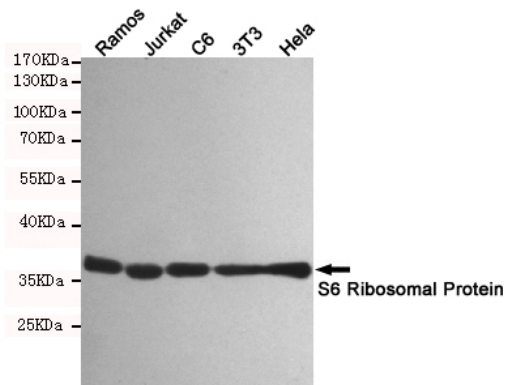


Immunocytochemistry staining of HeLa cells fixed with 4% Paraformaldehyde and using anti-S6 Ribosomal Protein mouse mAb (dilution 1:200).

Anti-RPS6 (7B10) Mouse antibody



Catalog Number: 168260



Western blot detection of S6 Ribosomal Protein in Ramos, Jurkat, C6, 3T3 and HeLa cell lysates using S6 Ribosomal Protein mouse mAb (1:2000 diluted). Predicted band size: 60 kDa. Observed band size: 60 kDa.