

# HER2/ErbB2 antibody

Catalog Number: 107260

## Product name

HER2/ErbB2 antibody

## Specificity

Human; other species not tested.

## Antibody description

HER2/ErbB2 Mouse Monoclonal antibody. Positive IHC detected in human breast cancer tissue. Positive FC detected in HeLa cells.

## Preparation

This antibody was obtained by immunization of HER2/ErbB2 recombinant protein (Accession Number: NM\_004448). Purification method: Protein A purified.

## Formulation

PBS with 0.02% sodium azide and 50% glycerol pH 7.3.

## Storage

Store at -20°C. DO NOT ALIQUOT

## Clonality

Monoclonal

## Ig Type

Mouse IgG2b

## Applications

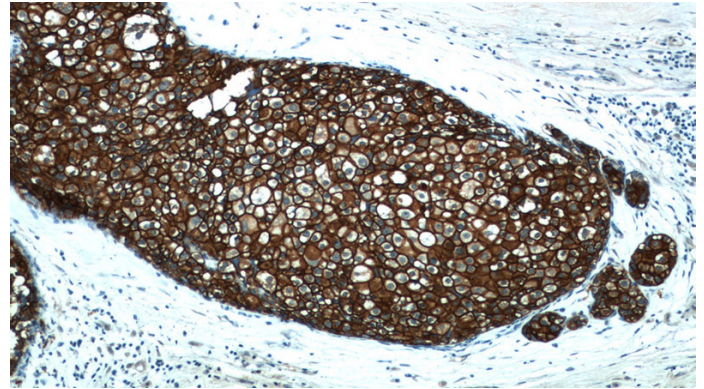
ELISA, IHC, FC

## Dilutions

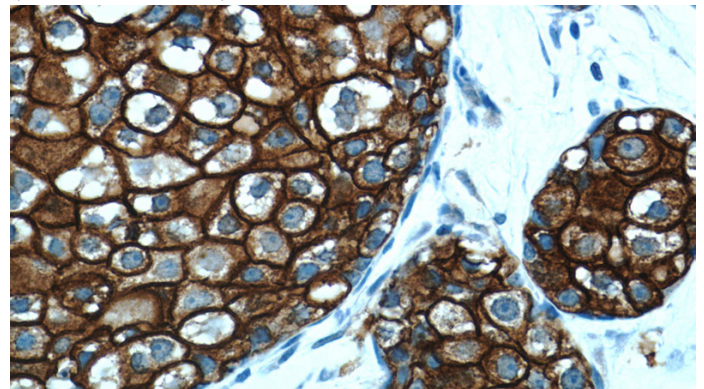
Recommended Dilution:

IHC: 1:50-1:400

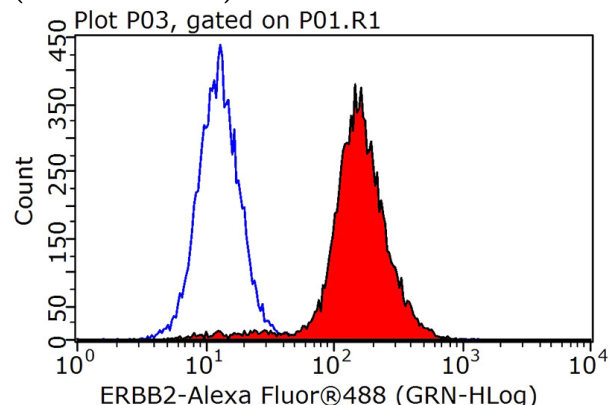
## Validations



Immunohistochemistry of paraffin-embedded human breast cancer tissue slide using Catalog No:107260(ERBB2 Antibody) at dilution of 1:200 (under 10x lens)



Immunohistochemistry of paraffin-embedded human breast cancer tissue slide using Catalog No:107260(ERBB2 Antibody) at dilution of 1:200 (under 40x lens)



1X10<sup>6</sup> HeLa cells were stained with 0.2ug ERBB2 antibody (Catalog No:107260, red) and control antibody (blue). Fixed with 90% MeOH blocked with 3% BSA (30 min). Alexa Fluor 488-conjugated AffiniPure Goat Anti-Mouse IgG(H+L) with dilution 1:1000.