

tPA antibody

Catalog Number: 116260

Product name

tPA antibody

WB: 1:500-1:5000

IP: 1:500-1:5000

Specificity

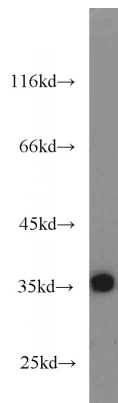
Human, Mouse, Rat; other species not tested.

IHC: 1:20-1:200

Antibody description

tPA Rabbit Polyclonal antibody. Positive IHC detected in human pancreas cancer tissue, human ovary tumor tissue, human placenta tissue. Positive IP detected in mouse kidney tissue. Positive WB detected in mouse pancreas tissue, mouse kidney tissue. Observed molecular weight by Western-blot: 32-35 kDa, 65 kDa

Validations



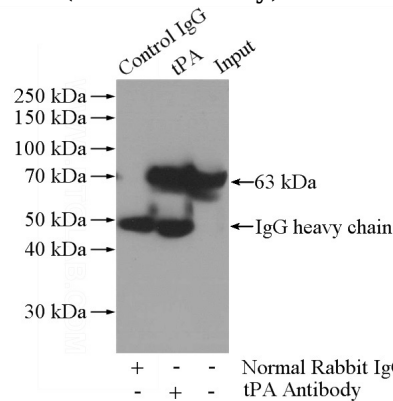
Preparation

This antibody was obtained by immunization of tPA recombinant protein (Accession Number: NM_033011). Purification method: Antigen affinity purified.

mouse pancreas tissue were subjected to SDS PAGE followed by western blot with Catalog No:116260(PLAT antibody) at dilution of 1:1000

Formulation

PBS with 0.1% sodium azide and 50% glycerol pH 7.3.



Storage

Store at -20°C. DO NOT ALIQUOT

Clonality

Polyclonal

Ig Type

Rabbit IgG

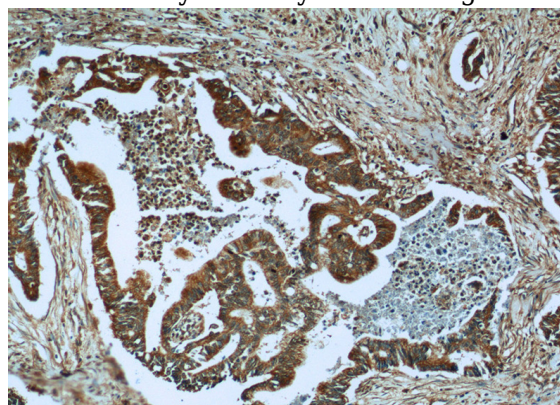
Applications

ELISA, WB, IHC, IP

Dilutions

Recommended Dilution:

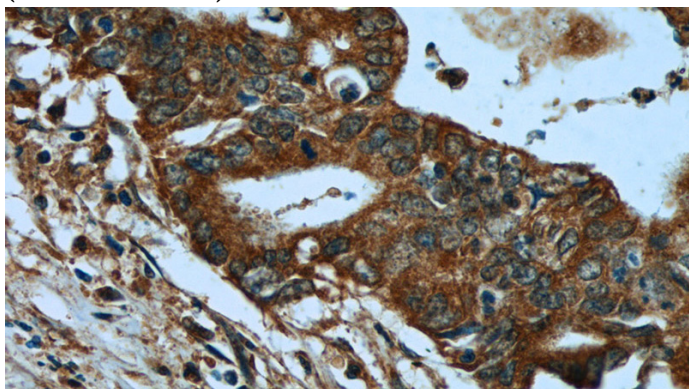
IP Result of anti-PLAT (IP:Catalog No:116260, 3ug; Detection:Catalog No:116260 1:1000) with mouse kidney tissue lysate 4000ug.



tPA antibody

Catalog Number: 116260

Immunohistochemistry of paraffin-embedded human pancreas cancer tissue slide using Catalog No:116260(PLAT Antibody) at dilution of 1:50 (under 10x lens)



Immunohistochemistry of paraffin-embedded human pancreas cancer tissue slide using Catalog No:116260(PLAT Antibody) at dilution of 1:50 (under 40x lens)