

# Anti-KIR2DL5A antibody



Catalog Number: 142260

## Product name

Anti-KIR2DL5A antibody

## Specificity

Human KI2LA / KIR2DL5A

## Antibody description

Rabbit Polyclonal to Human KIR2DL5A

## Preparation

Produced in rabbits immunized with a synthetic peptide corresponding to the center region of the Human KI2LA / KIR2DL5A, and purified by antigen affinity chromatography.

## Formulation

0.2 µm filtered solution in PBS

## Storage

This antibody can be stored at 2°C-8°C for one month without detectable loss of activity. Antibody products are stable for twelve months from date of receipt when stored at -20°C to -80°C.

Preservative-Free.

Sodium azide is recommended to avoid contamination (final concentration 0.05%-0.1%). It is toxic to cells and should be disposed of

properly. Avoid repeated freeze-thaw cycles.

## Clonality

Polyclonal

## Ig Type

Rabbit IgG

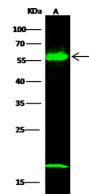
## Applications

WB

## Dilutions

WB: 2-10 µg/ml

## Validations



Items	Lanes	A
Sample (whole cell lysate)		293T
Sample Volume (µg/lane)		30
Gel		13%SDS-PAGE reducing gel
Recommended Concentration		2-10 µg/ml
Secondary Antibody		Dylight 800 Labeled Antibody to Rabbit IgG (H+), at 1:5000 dilution.
Developed using Odyssey imaging system.		
Explanation		Predicted band size : 41 kDa Observed band size : 57 kDa Additional bands at : 18 kDa (We are unsure as to the identity of these extra bands.)

Human KI2LA/KIR2DL5A Western blot (WB)  
14563