

# EIF4E2 antibody

Catalog Number: 110260

## Product name

EIF4E2 antibody

## Specificity

Human, Mouse, Rat; other species not tested.

## Antibody description

EIF4E2 Rabbit Polyclonal antibody. Positive WB detected in HeLa cells, MCF7 cells, mouse kidney tissue. Positive IP detected in MCF-7 cells. Observed molecular weight by Western-blot: 28 kDa

## Preparation

This antibody was obtained by immunization of EIF4E2 recombinant protein (Accession Number: NM\_004846). Purification method: Antigen affinity purified.

## Formulation

PBS with 0.02% sodium azide and 50% glycerol pH 7.3.

## Storage

Store at -20°C. DO NOT ALIQUOT

## Clonality

Polyclonal

## Ig Type

Rabbit IgG

## Applications

ELISA, WB, IP

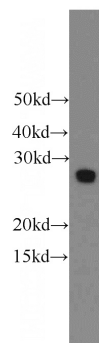
## Dilutions

Recommended Dilution:

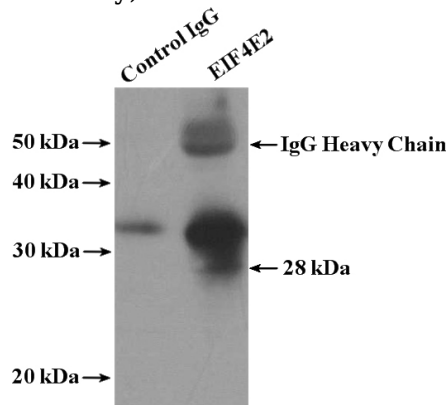
WB: 1:200-1:2000

IP: 1:200-1:2000

## Validations



HeLa cells were subjected to SDS PAGE followed by western blot with Catalog No:110260(EIF4E2 antibody) at dilution of 1:500



IP Result of anti-EIF4E2 (IP:Catalog No:110260, 4ug; Detection:Catalog No:110260 1:500) with MCF-7 cells lysate 1280ug.