

Anti-Latexin antibody



Catalog Number: 103560

Product name

Anti-Latexin antibody

Immunogen

[Mouse Latexin \(His Tag\) recombinant protein](#)

Specificity

Mouse Latexin / LXN

Antibody description

Rabbit polyclonal to Latexin

Preparation

Produced in rabbits immunized with purified, recombinant Mouse Latexin / LXN (rM Latexin / LXN; NP_058033.2; Glu 2-Glu 222). Latexin / LXN specific IgG was purified by Mouse Latexin / LXN affinity chromatography.

Formulation

0.2 µm filtered solution in PBS with 5% trehalose

Storage

This antibody can be stored at 2°C-8°C for one month without detectable loss of activity. Antibody products are stable for twelve months from date of receipt when stored at -20°C to -80°C.

Preservative-Free.

Sodium azide is recommended to avoid contamination (final concentration 0.05%-0.1%). It is toxic to cells and should be disposed of properly. Avoid repeated freeze-thaw cycles.

Clonality

Polyclonal

Ig Type

Rabbit IgG

Applications

ELISA, WB, IP

Dilutions

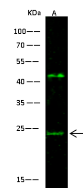
WB: 10-30 µg/mL

ELISA: 0.1-0.2 µg/mL

This antibody can be used at 0.1-0.2 µg/mL with the appropriate secondary reagents to detect Mouse LXN. The detection limit for Mouse LXN is approximately 0.00245 µg/well.

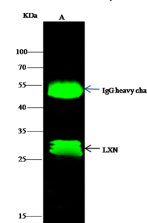
IP: 0.5-2 µg/mg of lysate

Validations



| Items | Lanes |
|--|---|
| Sample (whole cell lysate) | Hela |
| Sample Volume (µg/lane) | 30 |
| Gel | 13% SDS-PAGE reducing gel |
| Recommended Concentration | 10-30 µg/ml |
| Secondary Antibody | Dylight 800 labeled Antibody to Rabbit IgG (H+), at 1:5000 dilution. |
| Developed using Odyssey imaging system | |
| Explanation | Predicted band size : 26 kDa Observed band size : 24 kDa Additional bands at : 42 kDa (We are unsure as to the identity of these extra bands. They are possible non-specific bindings). |

Latexin / LXN Antibody, Rabbit PAb, Antigen Affinity Purified, Western blot



| Items | Lanes |
|----------------------------|---|
| Sample (whole cell lysate) | MCF-7 |
| Sample quantity | 0.5 mg |
| IP antibody quantity | 2 µg |
| Protein G agarose | 15 µl of 50 % Protein G Agarose |
| Gel | 13 % SDS-PAGE reducing gel |
| Primary antibody | mLXN antibody at 10 µg/ml |
| Secondary antibody | Dylight 800-labeled antibody to rabbit IgG (H+), at 1:5000 dilution |

Latexin / LXN Antibody, Rabbit PAb, Antigen Affinity Purified