

Anti-PRPF6 antibody



Catalog Number: 142160

Product name

Anti-PRPF6 antibody

Specificity

Human PRPF6

Antibody description

Rabbit Polyclonal to Human PRPF6

Preparation

Produced in rabbits immunized with a synthetic peptide corresponding to the N-terminus of the Human PRPF6, and purified by antigen affinity chromatography.

Formulation

0.2 µm filtered solution in PBS

Storage

This antibody can be stored at 2°C-8°C for one month without detectable loss of activity. Antibody products are stable for twelve months from date of receipt when stored at -20°C to -80°C. Preservative-Free. Sodium azide is recommended to avoid contamination (final concentration 0.05%-0.1%). It is toxic to cells and should be disposed of properly. Avoid repeated freeze-thaw cycles.

Clonality

Polyclonal

Ig Type

Rabbit IgG

Applications

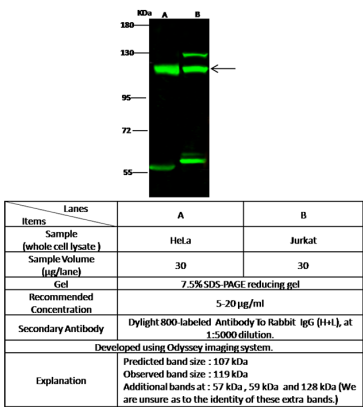
WB, IP

Dilutions

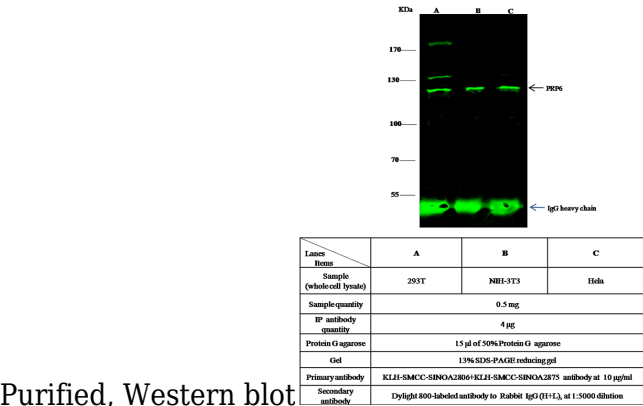
WB: 5-20 µg/ml

IP: 1-4 µl/mg of lysate

Validations



PRPF6 Antibody, Rabbit PAb, Antigen Affinity



Purified, Western blot

PRPF6 Antibody, Rabbit PAb, Antigen Affinity
Purified, Immunoprecipitation