

CDK20 Polyclonal Antibody



Catalog Number: 163860

Product name

CDK20 Polyclonal Antibody

Specificity

Human, Rat

Antibody description

Polyclonal antibody to CDK20

Preparation

Antigen: A synthetic peptide of human CDK20

Formulation

PBS with 0.02% sodium azide, 50% glycerol, pH7.3.

Storage

Store at -20°C. Avoid freeze / thaw cycles.

Clonality

Polyclonal

Ig Type

Rabbit IgG

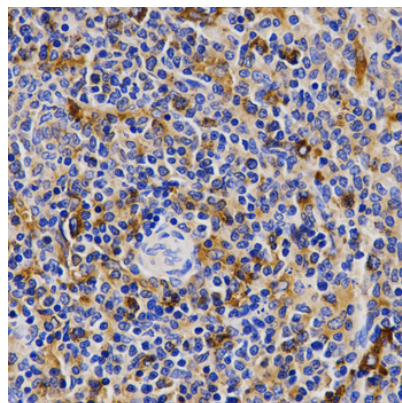
Applications

IHC

Dilutions

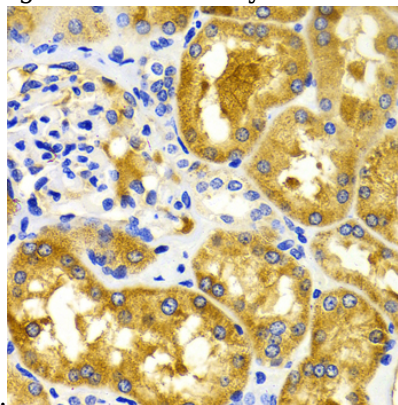
IHC 1:50 - 1:100

Validations



Immunohistochemistry - CDK20 Polyclonal Antibody

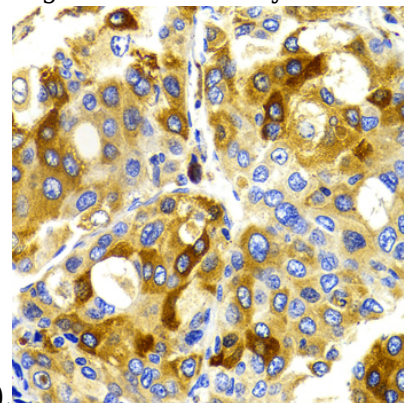
Immunohistochemistry of paraffin-embedded rat spleen using CDK20 antibody at dilution of 1:200



(40x lens).

Immunohistochemistry - CDK20 Polyclonal Antibody

Immunohistochemistry of paraffin-embedded human kidney using CDK20 antibody at dilution of



1:100 (40x lens).

Immunohistochemistry - CDK20 Polyclonal Antibody

CDK20 Polyclonal Antibody



Catalog Number: 163860

Immunohistochemistry of paraffin-embedded

human liver cancer using CDK20 antibody at
dilution of 1:100 (40x lens).