

Coproporphyrinogen oxidase antibody



Catalog Number: 109460

Product name

Coproporphyrinogen oxidase antibody

WB: 1:1000-1:10000

IP: 1:200-1:2000

Specificity

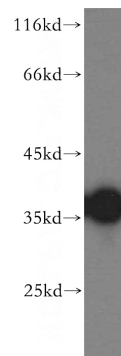
Human, Mouse, Rat; other species not tested.

IHC: 1:20-1:200

Antibody description

Coproporphyrinogen oxidase Rabbit Polyclonal antibody. Positive IHC detected in human medulloblastoma tissue, human liver tissue. Positive IP detected in HepG2 cells. Positive WB detected in human liver tissue, HepG2 cells, Jurkat cells, K-562 cells. Observed molecular weight by Western-blot: 36kd

Validations



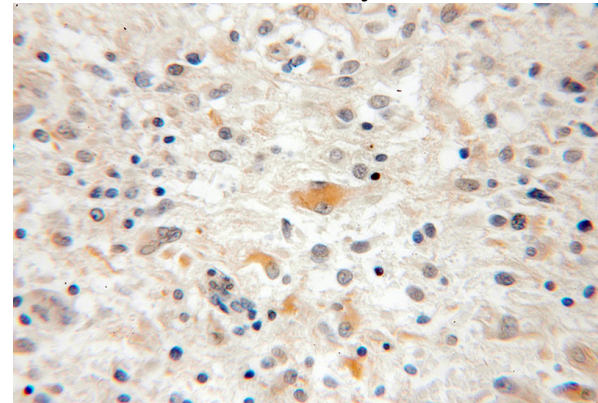
Preparation

This antibody was obtained by immunization of Coproporphyrinogen oxidase recombinant protein (Accession Number: NM_000097). Purification method: Antigen affinity purified.

human liver tissue were subjected to SDS PAGE followed by western blot with Catalog No:109460(CPOX antibody) at dilution of 1:500

Formulation

PBS with 0.1% sodium azide and 50% glycerol pH 7.3.



Storage

Store at -20°C. DO NOT ALIQUOT

Clonality

Polyclonal

Immunohistochemical of paraffin-embedded human medulloblastoma using Catalog No:109460(CPOX antibody) at dilution of 1:100 (under 10x lens)

Ig Type

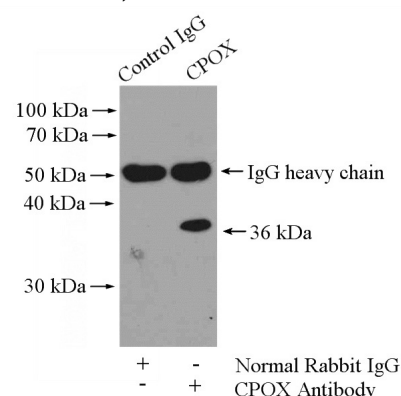
Rabbit IgG

Applications

ELISA, WB, IHC, IP

Dilutions

Recommended Dilution:



Coproporphyrinogen oxidase antibody



Catalog Number: 109460

IP Result of anti-CPOX (IP:Catalog No:109460,

4ug; Detection:Catalog No:109460 1:500) with
HepG2 cells lysate 2400ug.