

BMP15 antibody

Catalog Number: 108460

Product name

BMP15 antibody

Specificity

Human, Mouse; other species not tested.

Antibody description

BMP15 Rabbit Polyclonal antibody. Positive WB detected in A2780 cells, mouse ovary tissue. Positive IHC detected in human prostate cancer tissue. Observed molecular weight by Western-blot: 50 kDa

Preparation

This antibody was obtained by immunization of Peptide (Accession Number: NM_005448). Purification method: Antigen affinity purified.

Formulation

PBS with 0.1% sodium azide and 50% glycerol pH 7.3.

Storage

Store at -20°C. DO NOT ALIQUOT

Clonality

Polyclonal

Ig Type

Rabbit IgG

Applications

ELISA, WB, IHC

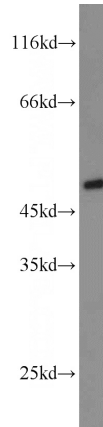
Dilutions

Recommended Dilution:

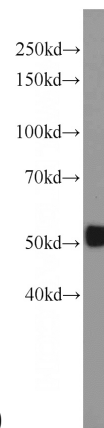
WB: 1:200-1:1000

IHC: 1:20-1:200

Validations

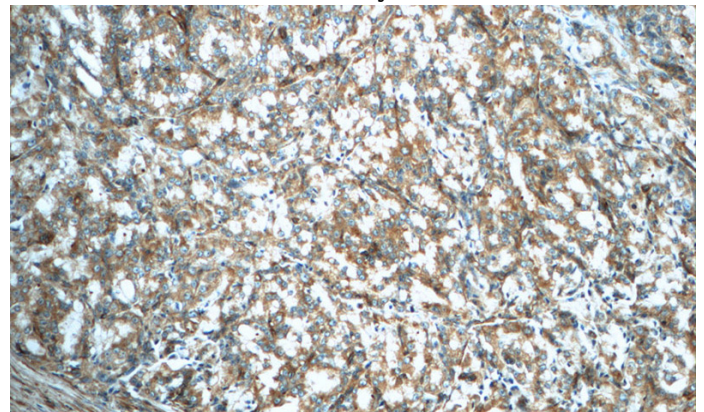


A2780 cells were subjected to SDS PAGE followed by western blot with Catalog No:117195(BMP15



antibody) at dilution of 1:300

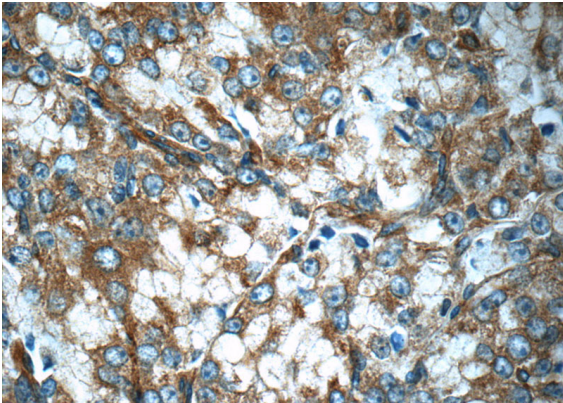
mouse ovary tissue were subjected to SDS PAGE followed by western blot with Catalog No:117195(BMP15 antibody) at dilution of 1:300



Immunohistochemistry of paraffin-embedded human prostate cancer slide using Catalog No:117195(BMP15 Antibody) at dilution of 1:50 (under 10x lens)

BMP15 antibody

Catalog Number: 108460



Immunohistochemistry of paraffin-embedded human prostate cancer slide using Catalog No:117195(BMP15 Antibody) at dilution of 1:50 (under 40x lens)