

RAB8A antibody

Catalog Number: 114460

Product name

RAB8A antibody

IP: 1:200-1:2000

IF: 1:10-1:100

Specificity

Human, Mouse, Rat; other species not tested.

Antibody description

RAB8A Rabbit Polyclonal antibody. Positive WB detected in HeLa cells, HepG2 cells, human brain tissue, mouse lung tissue, mouse skin tissue, NIH/3T3 cells. Positive IP detected in HeLa cells. Positive IF detected in IMCD3 cells, NIH/3T3 cells. Observed molecular weight by Western-blot: 24 kDa

Preparation

This antibody was obtained by immunization of Peptide (Accession Number: NM_005370). Purification method: Antigen affinity purified.

Formulation

PBS with 0.02% sodium azide and 50% glycerol pH 7.3.

Storage

Store at -20°C. DO NOT ALIQUOT

Clonality

Polyclonal

Ig Type

Rabbit IgG

Applications

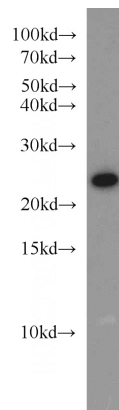
ELISA, WB, IF, IP

Dilutions

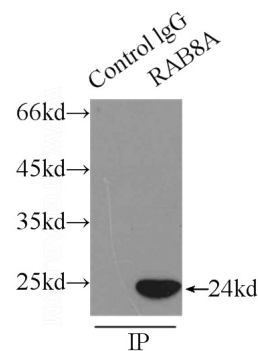
Recommended Dilution:

WB: 1:500-1:5000

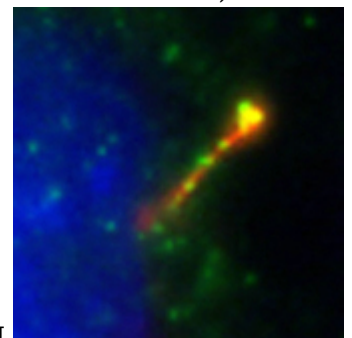
Validations



HeLa cells were subjected to SDS PAGE followed by western blot with Catalog No:114460(RAB8A antibody) at dilution of 1:1000



IP Result of anti-RAB8A (IP:Catalog No:114460, 3ug; Detection:Catalog No:114460 1:500) with



HeLa cells lysate 2500ug.

IF result of Catalog No:114460 (anti-RAB8A, Green) in ciliated IMCD3 cells by Dr. Seongjin Seo. (Red is the primary cilium, and blue is the nucleus) The stain of this antibody is

RAB8A antibody



Catalog Number: 114460

weaker.