

Anti-Sumo 1 Rabbit antibody



Catalog Number: 167060

Product name

Anti-Sumo 1 Rabbit antibody

Specificity

Human, Mouse, Rat

Antibody description

Sumo 1 Rabbit polyclonal antibody

Preparation

Antigen: A synthetic peptide of human Sumo 1

Formulation

Supplied in 50nM Tris-Glycine(pH 7.4), 0.15M NaCl, 40%Glycerol, 0.01% sodium azide and 0.05% BSA.

Storage

Store at -20°C. Stable for 12 months from date of receipt.

Clonality

Polyclonal

Ig Type

Rabbit IgG

Applications

WB, IHC-P, ICC/IF, FC, IP, ChIP

Dilutions

WB: 1/1000

IHC: 1/50

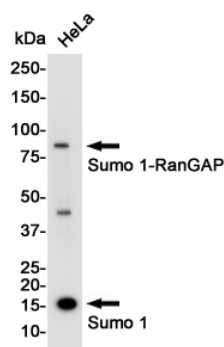
ICC/IF: 1/50

FC: 1/20

IP: 1/20

ChIP: 1/20

Validations



Western blot detection of SUMO-1 in HeLa cell lysates using SUMO-1 Rabbit pAb(1:1000 diluted). Predicted band size:12KDa. Observed band size:80,12KDa.