

# POP1 antibody

Catalog Number: 114060

## Product name

POP1 antibody

IP: 1:200-1:2000

IF: 1:10-1:100

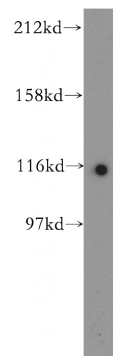
## Specificity

Human, Mouse, Rat; other species not tested.

## Antibody description

POP1 Rabbit Polyclonal antibody. Positive IF detected in HepG2 cells. Positive WB detected in HeLa cells. Positive IP detected in HeLa cells. Observed molecular weight by Western-blot: 115 kDa

## Validations



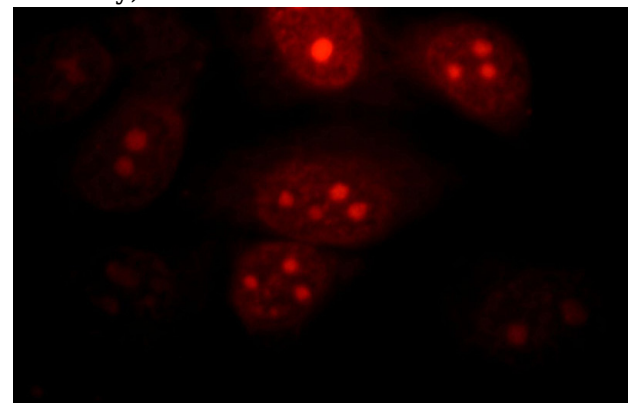
## Preparation

This antibody was obtained by immunization of POP1 recombinant protein (Accession Number: NM\_015029). Purification method: Antigen affinity purified.

HeLa cells were subjected to SDS PAGE followed by western blot with Catalog No:114060(POP1 antibody) at dilution of 1:500

## Formulation

PBS with 0.1% sodium azide and 50% glycerol pH 7.3.



## Storage

Store at -20°C. DO NOT ALIQUOT

## Clonality

Polyclonal

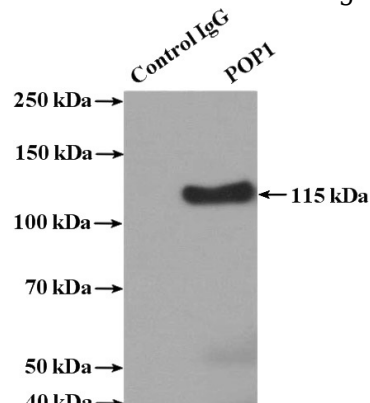
Immunofluorescent analysis of HepG2 cells, using POP1 antibody Catalog No:114060 at 1:25 dilution and Rhodamine-labeled goat anti-rabbit IgG (red).

## Ig Type

Rabbit IgG

## Applications

ELISA, WB, IF, IP



## Dilutions

Recommended Dilution:

WB: 1:200-1:2000

IP Result of anti-POP1 (IP:Catalog No:114060, 4ug; Detection:Catalog No:114060 1:500) with

# POP1 antibody



Catalog Number: 114060

---

HeLa cells lysate 2400ug.