

General Information

Gene Name Synonym

Interleukin-1 receptor-like 1 ligand; Putative T1/ST2 receptor-binding protein; p24 family protein gamma-1

Protein Construction

A DNA sequence encoding the human TMED1 (Q13445) (Met1-Asn194) was expressed with a polyhistidine tag at the C-terminus.

Organism

Human

Expression Host

Human Cells

QC Testing

Purity

> 90 % as determined by SDS-PAGE

Endotoxin

< 1.0 EU per μg of the protein as determined by the LAL method

Stability

Samples are stable for up to twelve months from date of receipt at -70°C

Predicted N terminal

Ala 24

Molecular Mass

The recombinant human TMED1 consists of 182 amino acids and predicts a molecular mass of 20.6 KDa. It migrates as an approximately 28 KDa band in SDS-PAGE under reducing conditions.

Formulation

Lyophilized from sterile PBS, pH 7.4

1. 5 % trehalose and mannitol are added as protectants before lyophilization.

2. Please contact us for any concerns or special requirements.

Usage Guide

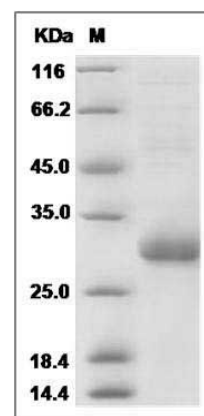
Storage

Store it under sterile conditions at -20°C to -80°C . It is recommended that the protein be aliquoted for optimal storage. Avoid repeated freeze-thaw cycles.

Reconstitution

Adding sterile water, prepare a stock solution of 0.25 mg/ml. Concentration is measured by UV-Vis.

SDS-PAGE



Human TMED1 Protein (His Tag) SDS-PAGE