

NDUFA4L2 antibody



Catalog Number: 113060

Product name

NDUFA4L2 antibody

Specificity

Human, Mouse, Rat; other species not tested.

Antibody description

NDUFA4L2 Rabbit Polyclonal antibody. Positive IP detected in HeLa cells. Positive WB detected in HeLa cells, human brain tissue, human liver tissue. Positive IHC detected in human kidney tissue, human heart tissue, human liver tissue, human lung tissue, human spleen tissue, human testis tissue. Positive IF detected in HepG2 cells. Observed molecular weight by Western-blot: 10 kDa

Preparation

This antibody was obtained by immunization of NDUFA4L2 recombinant protein (Accession Number: NM_001394960). Purification method: Antigen affinity purified.

Formulation

PBS with 0.02% sodium azide and 50% glycerol pH 7.3.

Storage

Store at -20°C. DO NOT ALIQUOT

Clonality

Polyclonal

Ig Type

Rabbit IgG

Applications

ELISA, WB, IHC, IF, IP

Dilutions

Recommended Dilution:

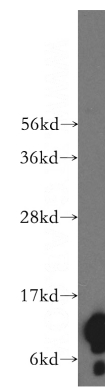
WB: 1:500-1:5000

IP: 1:200-1:2000

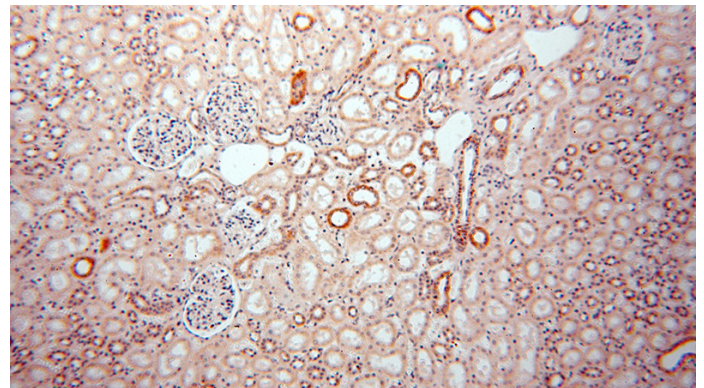
IHC: 1:20-1:200

IF: 1:10-1:100

Validations



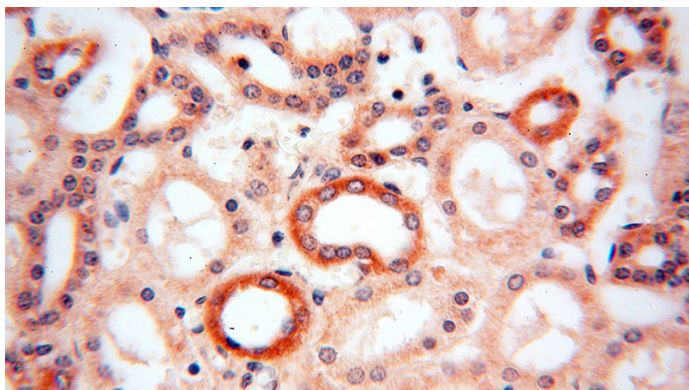
HeLa cells were subjected to SDS PAGE followed by western blot with Catalog No:113060(NDUFA4L2 antibody) at dilution of 1:600



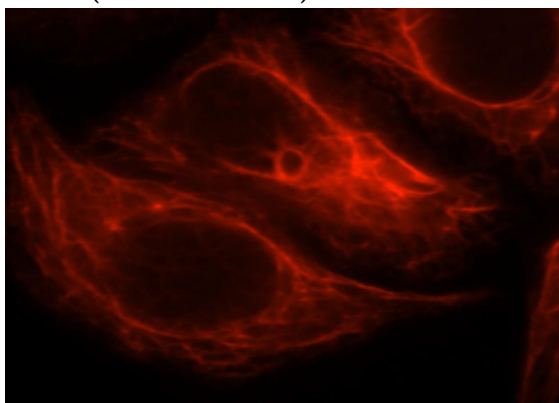
Immunohistochemical of paraffin-embedded human kidney using Catalog No:113060(NDUFA4L2 antibody) at dilution of 1:100 (under 10x lens)

NDUFA4L2 antibody

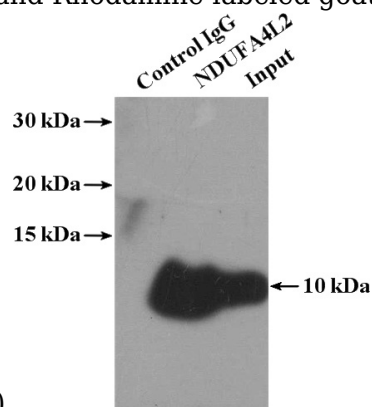
Catalog Number: 113060



Immunohistochemical of paraffin-embedded human kidney using Catalog No:113060(NDUFA4L2 antibody) at dilution of 1:100 (under 40x lens)



Immunofluorescent analysis of HepG2 cells, using NDUFA4L2 antibody Catalog No:113060 at 1:25 dilution and Rhodamine-labeled goat anti-rabbit



IgG (red).

IP Result of anti-NDUFA4L2 (IP:Catalog No:113060, 4ug; Detection:Catalog No:113060 1:500) with HeLa cells lysate 1200ug.