

# KIR2DL3 antibody



Catalog Number: 112060

## Product name

KIR2DL3 antibody

## Specificity

human; other species not tested.

## Antibody description

KIR2DL3 Rabbit Polyclonal antibody. Positive WB detected in human liver tissue. Observed molecular weight by Western-blot: 58 kDa

## Preparation

This antibody was obtained by immunization of KIR2DL3 recombinant protein (Accession Number: NM\_015868). Purification method: Antigen affinity purified.

## Formulation

PBS with 0.02% sodium azide and 50% glycerol pH 7.3.

## Storage

Store at -20°C. DO NOT ALIQUOT

## Clonality

Polyclonal

## Ig Type

Rabbit IgG

## Applications

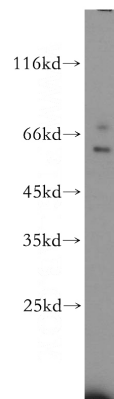
ELISA, WB

## Dilutions

Recommended Dilution:

WB: 1:200-1:2000

## Validations



human liver tissue were subjected to SDS PAGE followed by western blot with Catalog No:112060(KIR2DL3 antibody) at dilution of 1:500