

Anti-ECH1 antibody



Catalog Number: 142060

Product name

Anti-ECH1 antibody

Immunogen

[Human ECH1 \(His Tag\) recombinant protein](#)

Specificity

Human ECH1

Antibody description

Rabbit Monoclonal to Human ECH1

Preparation

This antibody was obtained from a rabbit immunized with purified, recombinant Human ECH1 .

Formulation

0.2 µm filtered solution in PBS

Storage

This antibody can be stored at 2°C-8°C for one month without detectable loss of activity. Antibody products are stable for twelve months from date of receipt when stored at -20°C to -80°C.

Preservative-Free.

Sodium azide is recommended to avoid contamination (final concentration 0.05%-0.1%). It is toxic to cells and should be disposed of properly. Avoid repeated freeze-thaw cycles.

Clonality

Monoclonal

Ig Type

Rabbit IgG

Applications

WB, ELISA

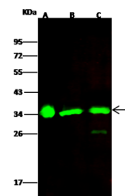
Dilutions

WB: 1-5 µg/ml

ELISA: 0.1-0.2 µg/ml

This antibody can be used at 0.1-0.2 µg/ml with the appropriate secondary reagents to detect Human ECH1.

Validations



| Items | Lanes | A | B | C |
|---|--|-------|--------|------|
| Sample (whole cell lysate) | | HepG2 | Jurkat | A549 |
| Sample Volume (µg/lane) | | 30 | 30 | 30 |
| Gel | 13% SDS-PAGE reducing gel | | | |
| Recommended Concentration | 1.5 µg/ml | | | |
| Secondary Antibody | Dylight 800-labeled Antibody to Rabbit IgG (H+L), at 1:5000 dilution. | | | |
| Developed using Odyssey imaging system. | | | | |
| Explanation | Predicted band size : 36 kDa Observed band size : 36 kDa Additional bands at : 26 kDa [We are unsure as to the identity of these extra bands.] | | | |

ECH1 Antibody, Rabbit MAb, Western blot