

SURVIVIN-Specific antibody



Catalog Number: 115750

Product name

SURVIVIN-Specific antibody

Specificity

Human, Mouse, Rat; other species not tested.

Antibody description

SURVIVIN-Specific Rabbit Polyclonal antibody. Positive IHC detected in human breast cancer tissue, human colon cancer tissue, human lung cancer tissue, human pancreas cancer tissue. Positive IF detected in HeLa cells.

Preparation

This antibody was obtained by immunization of Peptide (Accession Number: NM_001168). Purification method: Antigen affinity purified.

Formulation

PBS with 0.02% sodium azide and 50% glycerol pH 7.3.

Storage

Store at -20°C. DO NOT ALIQUOT

Clonality

Polyclonal

Ig Type

Rabbit IgG

Applications

ELISA, IHC, IF

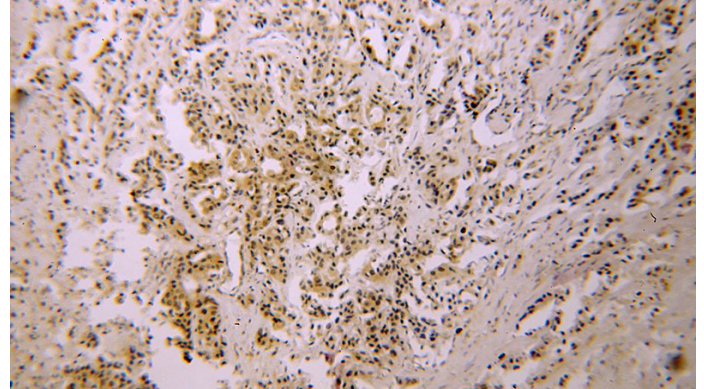
Dilutions

Recommended Dilution:

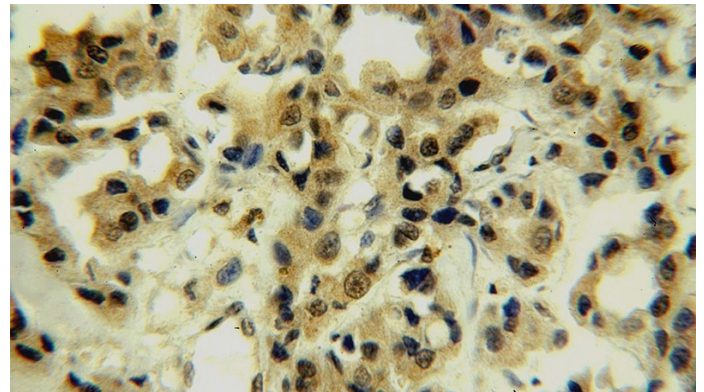
IHC: 1:20-1:200

IF: 1:20-1:200

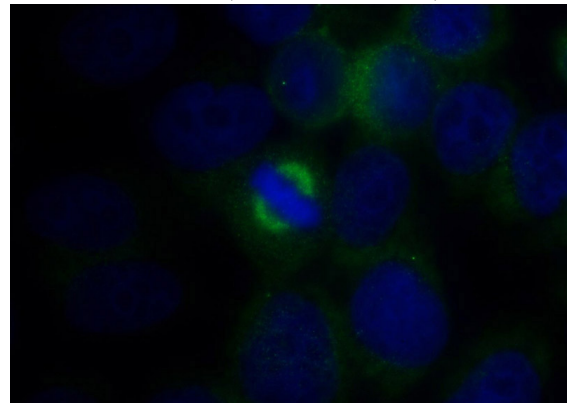
Validations



Immunohistochemical of paraffin-embedded human breast cancer using Catalog No:115750(SURVIVIN-Specific antibody) at dilution of 1:50 (under 10x lens)



Immunohistochemical of paraffin-embedded human breast cancer using Catalog No:115750(SURVIVIN-Specific antibody) at dilution of 1:50 (under 40x lens)



Immunofluorescent analysis of HeLa cells using Catalog No:115750(SURVIVIN-Specific Antibody) at dilution of 1:50 and Alexa Fluor 488-conjugated AffiniPure Goat Anti-Rabbit IgG(H+L)